



ELECTRONIC COPY

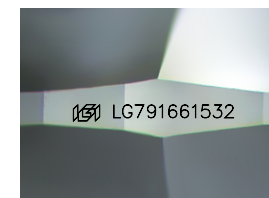
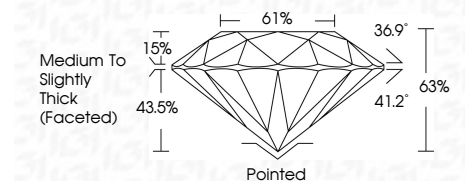
LG791661532
Report verification at igi.org



April 22, 2026
IGI Report Number LG791661532
Description LABORATORY GROWN DIAMOND
Shape and Cutting Style ROUND BRILLIANT
Measurements 6.31 - 6.36 X 3.99 MM

GRADING RESULTS

Carat Weight 1.02 CARAT
Color Grade D
Clarity Grade VS 1
Cut Grade VERY GOOD



Sample Image Used

ADDITIONAL GRADING INFORMATION

Polish VERY GOOD
Symmetry VERY GOOD
Fluorescence NONE
Inscription(s) LG791661532
Comments: As Grown - No indication of post-growth treatment.
This Laboratory Grown Diamond was created by High Pressure High Temperature (HPHT) growth process.
Type II



April 22, 2026
IGI Report No LG791661532
ROUND BRILLIANT
6.31 - 6.36 X 3.99 MM
1.02 CARAT
Color Grade D
Clarity Grade VS 1
Cut Grade VERY GOOD
Depth 63%
Table 61%
Girdle Medium To Slightly Thick (Faceted)
Culet Pointed
Polish VERY GOOD
Symmetry VERY GOOD
Fluorescence NONE
Inscriptions(s) IGI LG791661532
Comments: As Grown - No indication of post-growth treatment.
This Laboratory Grown Diamond was created by High Pressure High Temperature (HPHT) growth process.
Type II

April 22, 2026
IGI Report Number LG791661532
Description LABORATORY GROWN DIAMOND
Shape and Cutting Style ROUND BRILLIANT
Measurements 6.31 - 6.36 X 3.99 MM

GRADING RESULTS

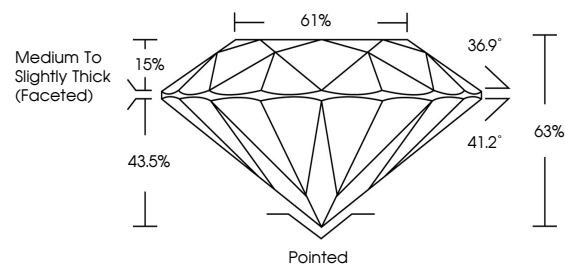
Carat Weight 1.02 CARAT
Color Grade D
Clarity Grade VS 1
Cut Grade VERY GOOD

ADDITIONAL GRADING INFORMATION

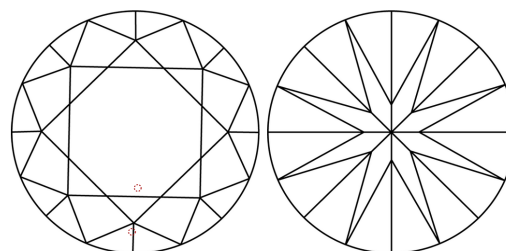
Polish VERY GOOD
Symmetry VERY GOOD
Fluorescence NONE
Inscription(s) LG791661532

Comments: As Grown - No indication of post-growth treatment.
This Laboratory Grown Diamond was created by High Pressure High Temperature (HPHT) growth process.
Type II

PROPORTIONS



CLARITY CHARACTERISTICS



KEY TO SYMBOLS

Red symbols indicate internal characteristics.
Green symbols indicate external characteristics.

COLOR

D E F G H I J Faint Very Light Light

CLARITY

FL IF VS 1-2 VS 2-3 SI 1-2 I 1-3
Flawless Internally Flawless Very Very Slightly Included Very Slightly Included Slightly Included Included

