



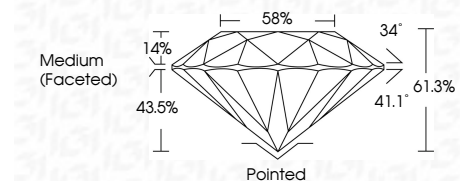
ELECTRONIC COPY

LG791661085
Report verification at igi.org



April 21, 2026
IGI Report Number LG791661085
Description LABORATORY GROWN DIAMOND
Shape and Cutting Style ROUND BRILLIANT
Measurements 8.18 - 8.23 X 5.02 MM

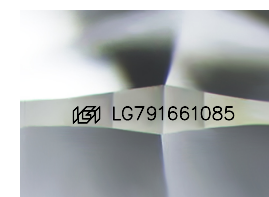
GRADING RESULTS
Carat Weight 2.08 CARATS
Color Grade G
Clarity Grade VVS 2
Cut Grade IDEAL



ADDITIONAL GRADING INFORMATION
Polish EXCELLENT
Symmetry EXCELLENT
Fluorescence NONE
Inscription(s) IGI LG791661085
Comments: This Laboratory Grown Diamond was created by Chemical Vapor Deposition (CVD) growth process. Type IIa

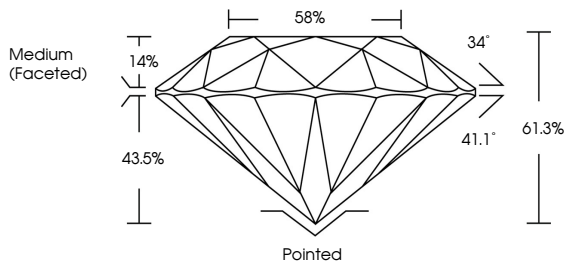


April 21, 2026
IGI Report No LG791661085
ROUND BRILLIANT
8.18 - 8.23 X 5.02 MM
2.08 CARATS
Color Grade G
Clarity Grade VVS 2
Cut Grade IDEAL
Depth 61.3%
Table 58%
Medium (Faceted)
Cutlet Pointed
Polish EXCELLENT
Symmetry EXCELLENT
Fluorescence NONE
Inscription(s) IGI LG791661085
Comments: This Laboratory Grown Diamond was created by Chemical Vapor Deposition (CVD) growth process. Type IIa

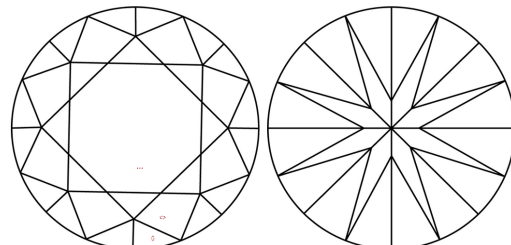


Sample Image Used

PROPORTIONS



CLARITY CHARACTERISTICS



KEY TO SYMBOLS
Red symbols indicate internal characteristics.
Green symbols indicate external characteristics.

COLOR

Table with color scale: D, E, F, G, H, I, J, Faint, Very Light, Light

CLARITY

Table with clarity scale: FL, IF, VVS 1-2, VS 1-2, SI 1-2, I 1-3, Flawless, Internally Flawless, Very Very Slightly Included, Very Slightly Included, Slightly Included, Included



April 21, 2026
IGI Report Number LG791661085
Description LABORATORY GROWN DIAMOND
Shape and Cutting Style ROUND BRILLIANT
Measurements 8.18 - 8.23 X 5.02 MM

GRADING RESULTS
Carat Weight 2.08 CARATS
Color Grade G
Clarity Grade VVS 2
Cut Grade IDEAL

ADDITIONAL GRADING INFORMATION
Polish EXCELLENT
Symmetry EXCELLENT
Fluorescence NONE
Inscription(s) IGI LG791661085

Comments: This Laboratory Grown Diamond was created by Chemical Vapor Deposition (CVD) growth process. Type IIa