



ELECTRONIC COPY

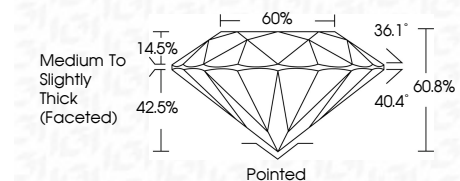
LG791660474
Report verification at igi.org



April 21, 2026
IGI Report Number LG791660474
Description LABORATORY GROWN DIAMOND
Shape and Cutting Style ROUND BRILLIANT
Measurements 8.02 - 8.10 X 4.91 MM

GRADING RESULTS

Carat Weight 2.00 CARATS
Color Grade D
Clarity Grade VS 2
Cut Grade IDEAL

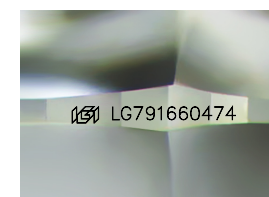


ADDITIONAL GRADING INFORMATION

Polish EXCELLENT
Symmetry EXCELLENT
Fluorescence NONE
Inscription(s) IGI LG791660474
Comments: This Laboratory Grown Diamond was created by Chemical Vapor Deposition (CVD) growth process. Type IIa

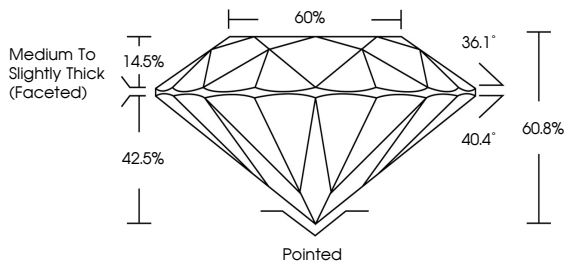


April 21, 2026
IGI Report No LG791660474
ROUND BRILLIANT
2.00 CARATS
D
8.02 - 8.10 X 4.91 MM
Carat Weight
Color Grade VS 2
Clarity Grade IDEAL
Depth 60.8%
Table 60%
Girdle Medium To Slightly Thick (Faceted)
Culet Pointed
Polish EXCELLENT
Symmetry EXCELLENT
Fluorescence NONE
Inscription(s) IGI LG791660474
Comments: This Laboratory Grown Diamond was created by Chemical Vapor Deposition (CVD) growth process. Type IIa

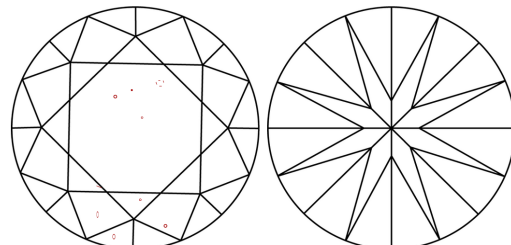


Sample Image Used

PROPORTIONS



CLARITY CHARACTERISTICS



KEY TO SYMBOLS

Red symbols indicate internal characteristics.
Green symbols indicate external characteristics.

COLOR

Color scale table with categories D, E, F, G, H, I, J, Faint, Very Light, Light

CLARITY

Clarity scale table with categories FL, IF, VS 1-2, VS 1-2, SI 1-2, I 1-3

