



ELECTRONIC COPY

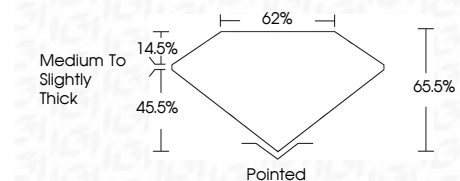
LG791656550
Report verification at igi.org



April 21, 2026
IGI Report Number **LG791656550**
Description **LABORATORY GROWN DIAMOND**
Shape and Cutting Style **CUT CORNERED
RECTANGULAR MODIFIED
BRILLIANT**
Measurements **12.44 X 8.17 X 5.35 MM**

GRADING RESULTS

Carat Weight **5.01 CARATS**
Color Grade **FANCY INTENSE YELLOW**
Clarity Grade **VVS 2**



ADDITIONAL GRADING INFORMATION

Polish **EXCELLENT**
Symmetry **EXCELLENT**
Fluorescence **NONE**
Inscription(s) **(LGI) LG791656550**
Comments: This Laboratory Grown Diamond was created by Chemical Vapor Deposition (CVD) growth process.



April 21, 2026
IGI Report No LG791656550
CUT CORNERED RECT. MODIFIED BRILLIANT
12.44 X 8.17 X 5.35 MM
5.01 CARATS
FANCY INTENSE YELLOW
VVS 2
65.5%
62%
Medium to Slightly Thick
Pointed
EXCELLENT
EXCELLENT
NONE
(LGI) LG791656550
Comments: This Laboratory Grown Diamond was created by Chemical Vapor Deposition (CVD) growth process.

LABORATORY GROWN DIAMOND REPORT

April 21, 2026
IGI Report Number **LG791656550**
Description **LABORATORY GROWN DIAMOND**
Shape and Cutting Style **CUT CORNERED RECTANGULAR
MODIFIED BRILLIANT**
Measurements **12.44 X 8.17 X 5.35 MM**

GRADING RESULTS

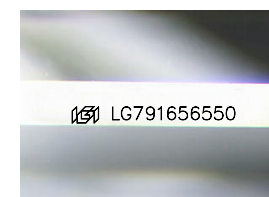
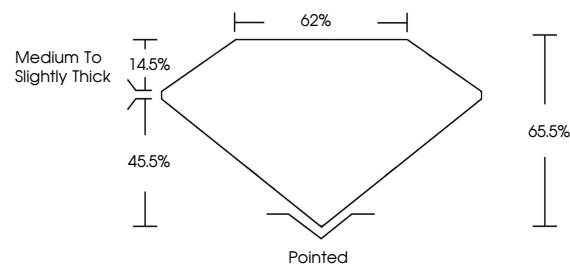
Carat Weight **5.01 CARATS**
Color Grade **FANCY INTENSE YELLOW**
Clarity Grade **VVS 2**

ADDITIONAL GRADING INFORMATION

Polish **EXCELLENT**
Symmetry **EXCELLENT**
Fluorescence **NONE**
Inscription(s) **(LGI) LG791656550**

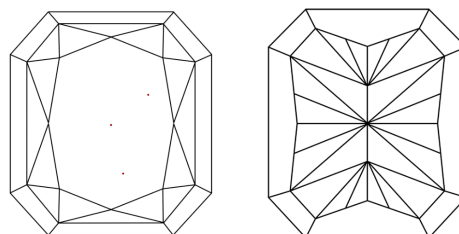
Comments: This Laboratory Grown Diamond was created by Chemical Vapor Deposition (CVD) growth process.

PROPORTIONS



Sample Image Used

CLARITY CHARACTERISTICS



KEY TO SYMBOLS

Red symbols indicate internal characteristics.
Green symbols indicate external characteristics.

COLOR

D E F G H I J Faint Very Light Light

CLARITY

FL	IF	VVS ¹⁻²	VS ¹⁻²	SI ¹⁻²	I ¹⁻³
Flawless	Internally Flawless	Very Very Slightly Included	Very Slightly Included	Slightly Included	Included

