



ELECTRONIC COPY

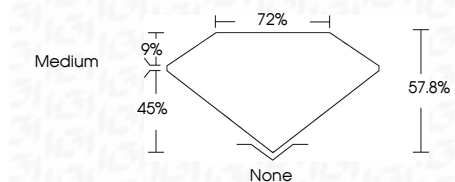
LG791653495
Report verification at igi.org



April 16, 2026
IGI Report Number **LG791653495**
Description **LABORATORY GROWN DIAMOND**
Shape and Cutting Style **MODIFIED KITE STEP CUT**
Measurements **11.28 X 5.24 X 3.03 MM**

GRADING RESULTS

Carat Weight **1.03 CARAT**
Color Grade **D**
Clarity Grade **VVS 2**



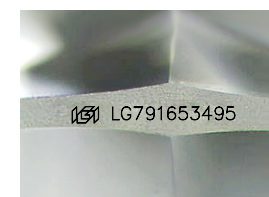
ADDITIONAL GRADING INFORMATION

Polish **EXCELLENT**
Symmetry **EXCELLENT**
Fluorescence **NONE**
Inscription(s) **IGI LG791653495**
Comments: This Laboratory Grown Diamond was created by Chemical Vapor Deposition (CVD) growth process. Type IIa



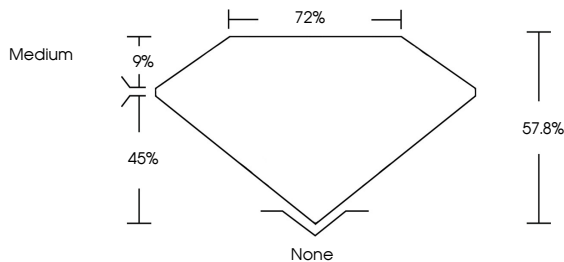
IGI

April 16, 2026
IGI Report No LG791653495
MODIFIED KITE STEP CUT
11.28 X 5.24 X 3.03 MM
1.03 CARAT
D
VVS 2
57.8%
72%
Medium
None
EXCELLENT
EXCELLENT
NONE
IGI LG791653495
Comments: This Laboratory Grown Diamond was created by Chemical Vapor Deposition (CVD) growth process. Type IIa

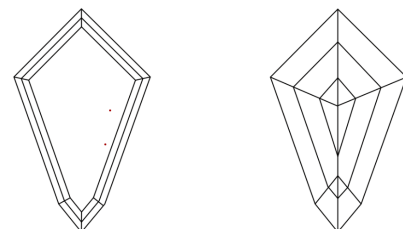


Sample Image Used

PROPORTIONS



CLARITY CHARACTERISTICS



KEY TO SYMBOLS

Red symbols indicate internal characteristics.
Green symbols indicate external characteristics.

COLOR

D	E	F	G	H	I	J	Faint	Very Light	Light
---	---	---	---	---	---	---	-------	------------	-------

CLARITY

FL	IF	VVS ¹⁻²	VS ¹⁻²	SI ¹⁻²	I ¹⁻³
Flawless	Internally Flawless	Very Very Slightly Included	Very Slightly Included	Slightly Included	Included

