



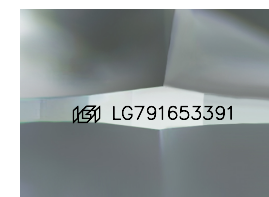
**ELECTRONIC COPY**

LG791653391  
Report verification at [igi.org](http://igi.org)



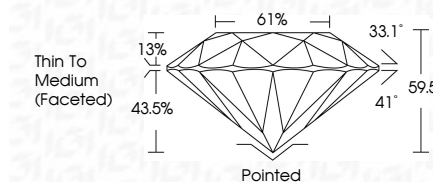
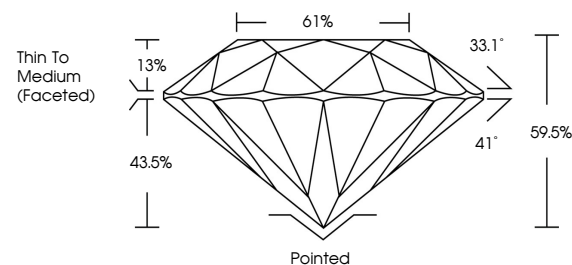
April 15, 2026  
IGI Report Number **LG791653391**  
Description **LABORATORY GROWN DIAMOND**  
Shape and Cutting Style **ROUND BRILLIANT**  
Measurements **6.59 - 6.61 X 3.93 MM**

**GRADING RESULTS**  
Carat Weight **1.04 CARAT**  
Color Grade **F**  
Clarity Grade **VS 1**  
Cut Grade **EXCELLENT**



Sample Image Used

**PROPORTIONS**



April 15, 2026  
IGI Report Number **LG791653391**  
Description **LABORATORY GROWN DIAMOND**  
Shape and Cutting Style **ROUND BRILLIANT**  
Measurements **6.59 - 6.61 X 3.93 MM**  
**GRADING RESULTS**  
Carat Weight **1.04 CARAT**  
Color Grade **F**  
Clarity Grade **VS 1**  
Cut Grade **EXCELLENT**

**ADDITIONAL GRADING INFORMATION**

Polish **EXCELLENT**  
Symmetry **EXCELLENT**  
Fluorescence **NONE**  
Inscription(s) **IGI LG791653391**

Comments: This Laboratory Grown Diamond was created by Chemical Vapor Deposition (CVD) growth process. Type IIa

**COLOR**

D E F G H I J Faint Very Light Light

**CLARITY**

FL	IF	VS <sup>1-2</sup>	VS <sup>1-2</sup>	SI <sup>1-2</sup>	I <sup>1-3</sup>
Flawless	Internally Flawless	Very Very Slightly Included	Very Slightly Included	Slightly Included	Included

**ADDITIONAL GRADING INFORMATION**

Polish **EXCELLENT**  
Symmetry **EXCELLENT**  
Fluorescence **NONE**  
Inscription(s) **IGI LG791653391**  
Comments: This Laboratory Grown Diamond was created by Chemical Vapor Deposition (CVD) growth process. Type IIa



**IGI**



April 15, 2026  
IGI Report No LG791653391  
**ROUND BRILLIANT**  
6.59 - 6.61 X 3.93 MM  
1.04 CARAT  
Color Grade **F**  
Clarity Grade **VS 1**  
Depth **EXCELLENT**  
Table **61%**  
Girdle **Thin To Medium (Faceted)**  
Culet **Pointed**  
Polish **EXCELLENT**  
Symmetry **EXCELLENT**  
Fluorescence **NONE**  
Inscriptions(s) **IGI LG791653391**  
Comments: This Laboratory Grown Diamond was created by Chemical Vapor Deposition (CVD) growth process. Type IIa