



ELECTRONIC COPY

LG791650957
Report verification at igi.org



April 18, 2026
IGI Report Number **LG791650957**
Description **LABORATORY GROWN DIAMOND**
Shape and Cutting Style **CUSHION MODIFIED BRILLIANT**
Measurements **7.98 X 6.38 X 4.29 MM**
GRADING RESULTS
Carat Weight **1.97 CARAT**
Color Grade **FANCY INTENSE YELLOW**
Clarity Grade **VVS 2**

April 18, 2026
IGI Report Number **LG791650957**
Description **LABORATORY GROWN DIAMOND**
Shape and Cutting Style **CUSHION MODIFIED BRILLIANT**
Measurements **7.98 X 6.38 X 4.29 MM**

GRADING RESULTS

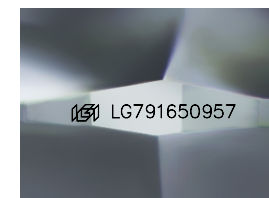
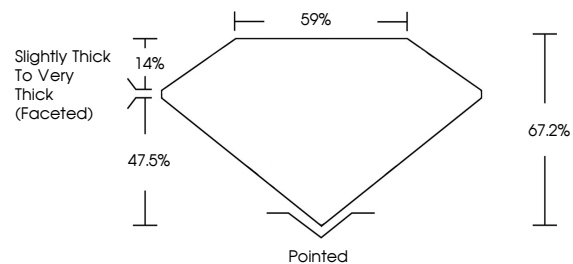
Carat Weight **1.97 CARAT**
Color Grade **FANCY INTENSE YELLOW**
Clarity Grade **VVS 2**

ADDITIONAL GRADING INFORMATION

Polish **EXCELLENT**
Symmetry **EXCELLENT**
Fluorescence **NONE**
Inscription(s) **IGI LG791650957**

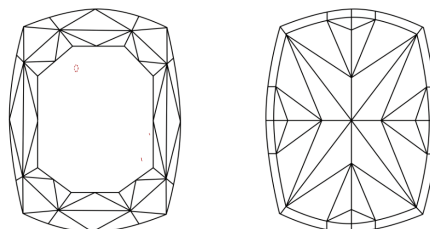
Comments: This Laboratory Grown Diamond was created by Chemical Vapor Deposition (CVD) growth process.

PROPORTIONS



Sample Image Used

CLARITY CHARACTERISTICS



KEY TO SYMBOLS

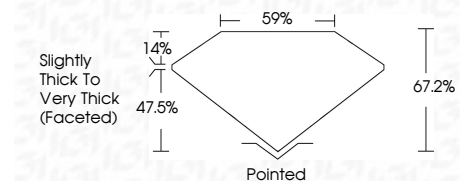
Red symbols indicate internal characteristics.
Green symbols indicate external characteristics.

COLOR

D E F G H I J Faint Very Light Light

CLARITY

FL	IF	VVS ¹⁻²	VS ¹⁻²	SI ¹⁻²	I ¹⁻³
Flawless	Internally Flawless	Very Very Slightly Included	Very Slightly Included	Slightly Included	Included



ADDITIONAL GRADING INFORMATION

Polish **EXCELLENT**
Symmetry **EXCELLENT**
Fluorescence **NONE**
Inscription(s) **IGI LG791650957**
Comments: This Laboratory Grown Diamond was created by Chemical Vapor Deposition (CVD) growth process.



April 18, 2026
IGI Report No LG791650957
CUSHION MODIFIED BRILLIANT
7.98 X 6.38 X 4.29 MM
1.97 CARAT
FANCY INTENSE YELLOW
VVS 2
67.2%
59%
Slightly Thick To Very Thick (Faceted)
Pointed
EXCELLENT
EXCELLENT
NONE
IGI LG791650957
Comments: This Laboratory Grown Diamond was created by Chemical Vapor Deposition (CVD) growth process.