



ELECTRONIC COPY

LG791650920
Report verification at igi.org



April 11, 2026
IGI Report Number **LG791650920**
Description **LABORATORY GROWN DIAMOND**
Shape and Cutting Style **CUSHION MODIFIED BRILLIANT**
Measurements **9.87 X 7.63 X 5.13 MM**
GRADING RESULTS
Carat Weight **3.04 CARATS**
Color Grade **F**
Clarity Grade **VVS 2**

LABORATORY GROWN DIAMOND REPORT

April 11, 2026
IGI Report Number **LG791650920**
Description **LABORATORY GROWN DIAMOND**
Shape and Cutting Style **CUSHION MODIFIED BRILLIANT**
Measurements **9.87 X 7.63 X 5.13 MM**

GRADING RESULTS

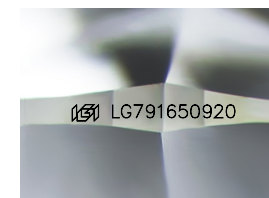
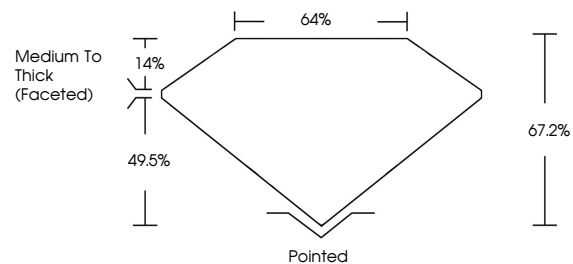
Carat Weight **3.04 CARATS**
Color Grade **F**
Clarity Grade **VVS 2**

ADDITIONAL GRADING INFORMATION

Polish **EXCELLENT**
Symmetry **EXCELLENT**
Fluorescence **NONE**
Inscription(s) **IGI LG791650920**

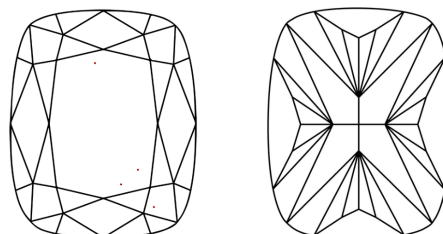
Comments: This Laboratory Grown Diamond was created by Chemical Vapor Deposition (CVD) growth process.
Type IIa

PROPORTIONS



Sample Image Used

CLARITY CHARACTERISTICS



KEY TO SYMBOLS

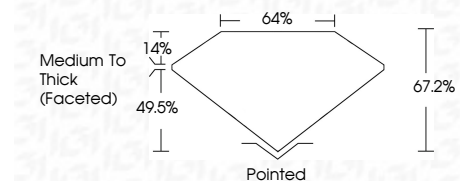
Red symbols indicate internal characteristics.
Green symbols indicate external characteristics.

COLOR

D E F G H I J Faint Very Light Light

CLARITY

| FL | IF | VVS ¹⁻² | VS ¹⁻² | SI ¹⁻² | I ¹⁻³ |
|----------|---------------------|-----------------------------|------------------------|-------------------|------------------|
| Flawless | Internally Flawless | Very Very Slightly Included | Very Slightly Included | Slightly Included | Included |



ADDITIONAL GRADING INFORMATION

Polish **EXCELLENT**
Symmetry **EXCELLENT**
Fluorescence **NONE**
Inscription(s) **IGI LG791650920**
Comments: This Laboratory Grown Diamond was created by Chemical Vapor Deposition (CVD) growth process.
Type IIa



April 11, 2026
IGI Report No **LG791650920**
CUSHION MODIFIED BRILLIANT
9.87 X 7.63 X 5.13 MM
3.04 CARATS **F**
Carat Weight
Color Grade
Clarity Grade **VVS 2**
Depth **67.2%**
Table **14%**
Girdle
Medium To Thick (Faceted)
Culet **Pointed**
Polish **EXCELLENT**
Symmetry **EXCELLENT**
Fluorescence **NONE**
Inscription(s) **IGI LG791650920**
Comments: This Laboratory Grown Diamond was created by Chemical Vapor Deposition (CVD) growth process.
Type IIa