



May 8, 2026

**IGI Report Number** LG791650199  
**ROUND BRILLIANT**  
**LABORATORY GROWN DIAMOND**  
**4.28 - 4.32 X 2.67 MM**

**Carat Weight** 0.31 CARAT  
**Color Grade** **FANCY INTENSE BLUE**

**Clarity Grade** I.F.  
**Cut Grade** **EXCELLENT**  
**Polish** **EXCELLENT**  
**Symmetry** **EXCELLENT**  
**Fluorescence** **NONE**  
**Inscription(s)** IGI LG791650199

**Comments:** As Grown - No indication of post-growth treatment. This Laboratory Grown Diamond was created by High Pressure High Temperature (HPHT) growth process.

**LABORATORY GROWN DIAMOND REPORT**

May 8, 2026  
IGI Report Number **LG791650199**  
Description **LABORATORY GROWN DIAMOND**  
Shape and Cutting Style **ROUND BRILLIANT**  
Measurements **4.28 - 4.32 X 2.67 MM**

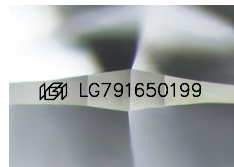
**GRADING RESULTS**

**Carat Weight** 0.31 CARAT  
**Color Grade** **FANCY INTENSE BLUE**  
**Clarity Grade** **INTERNALLY FLAWLESS**  
**Cut Grade** **EXCELLENT**

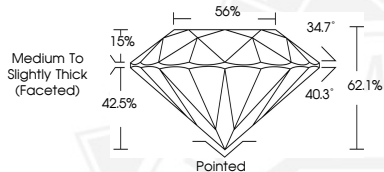
**ADDITIONAL GRADING INFORMATION**

**Polish** **EXCELLENT**  
**Symmetry** **EXCELLENT**  
**Fluorescence** **NONE**  
**Inscription(s)** IGI LG791650199

**Comments:** As Grown - No indication of post-growth treatment. This Laboratory Grown Diamond was created by High Pressure High Temperature (HPHT) growth process.



Sample Image Used



May 8, 2026

**IGI Report Number** LG791650199  
**ROUND BRILLIANT**  
**LABORATORY GROWN DIAMOND**  
**4.28 - 4.32 X 2.67 MM**

**Carat Weight** 0.31 CARAT  
**Color Grade** **FANCY INTENSE BLUE**

**Clarity Grade** I.F.  
**Cut Grade** **EXCELLENT**  
**Polish** **EXCELLENT**  
**Symmetry** **EXCELLENT**  
**Fluorescence** **NONE**  
**Inscription(s)** IGI LG791650199

**Comments:** As Grown - No indication of post-growth treatment. This Laboratory Grown Diamond was created by High Pressure High Temperature (HPHT) growth process.



THIS DOCUMENT WAS PRODUCED WITH THE FOLLOWING SECURITY MEASURES: SPECIAL DOCUMENT PAPER, INK SCREENS, WATERMARK, BACKGROUND DESIGNS, HOLOGRAM AND OTHER SECURITY FEATURES NOT LISTED AND DO EXCEED DOCUMENT SECURITY INDUSTRY GUIDELINES.