



May 13, 2026

**IGI Report Number** LG791650129  
**ROUND BRILLIANT**  
**LABORATORY GROWN DIAMOND**  
**5.23 - 5.30 X 3.25 MM**

**Carat Weight** 0.55 CARAT  
**Color Grade** FANCY INTENSE BLUE

**Clarity Grade** FLAWLESS  
**Cut Grade** IDEAL

**Polish** EXCELLENT  
**Symmetry** EXCELLENT

**Fluorescence** NONE  
**Inscription(s)** IGI LG791650129

Comments: As Grown - No indication of post-growth treatment. This Laboratory Grown Diamond was created by High Pressure High Temperature (HPHT) growth process.

**LABORATORY GROWN DIAMOND REPORT**

May 13, 2026

IGI Report Number

LG791650129

Description

LABORATORY GROWN DIAMOND

Shape and Cutting Style

ROUND BRILLIANT

Measurements

5.23 - 5.30 X 3.25 MM

**GRADING RESULTS**

Carat Weight

0.55 CARAT

Color Grade

FANCY INTENSE BLUE

Clarity Grade

FLAWLESS

Cut Grade

IDEAL

**ADDITIONAL GRADING INFORMATION**

Polish

EXCELLENT

Symmetry

EXCELLENT

Fluorescence

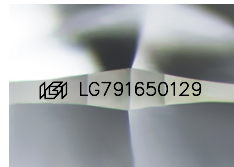
NONE

Inscription(s)

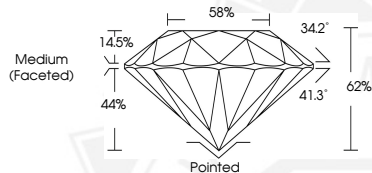
IGI LG791650129

Comments: As Grown - No indication of post-growth treatment.

This Laboratory Grown Diamond was created by High Pressure High Temperature (HPHT) growth process.



Sample Image Used



May 13, 2026

**IGI Report Number** LG791650129  
**ROUND BRILLIANT**  
**LABORATORY GROWN DIAMOND**  
**5.23 - 5.30 X 3.25 MM**

**Carat Weight** 0.55 CARAT  
**Color Grade** FANCY INTENSE BLUE

**Clarity Grade** FLAWLESS  
**Cut Grade** IDEAL

**Polish** EXCELLENT  
**Symmetry** EXCELLENT

**Fluorescence** NONE  
**Inscription(s)** IGI LG791650129

Comments: As Grown - No indication of post-growth treatment. This Laboratory Grown Diamond was created by High Pressure High Temperature (HPHT) growth process.



THIS DOCUMENT WAS PRODUCED WITH THE FOLLOWING SECURITY MEASURES: SPECIAL DOCUMENT PAPER, INK SCREENS, WATERMARK, BACKGROUND DESIGNS, HOLOGRAM AND OTHER SECURITY FEATURES NOT LISTED AND DO EXCEED DOCUMENT SECURITY INDUSTRY GUIDELINES.