



LABORATORY GROWN DIAMOND REPORT

April 14, 2026
 IGI Report Number **LG791647844**
 Description **LABORATORY GROWN DIAMOND**
 Shape and Cutting Style **ROUND ROSE CUT**
 Measurements **5.88 - 5.93 X 2.63 MM**

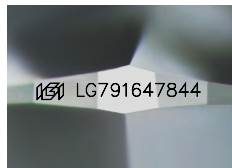
GRADING RESULTS

Carat Weight **0.73 CARAT**
 Color Grade **D**
 Clarity Grade **VS 2**

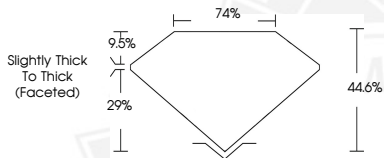
ADDITIONAL GRADING INFORMATION

Polish **VERY GOOD**
 Symmetry **VERY GOOD**
 Fluorescence **NONE**
 Inscription(s) **IGI LG791647844**

Comments: As Grown - No indication of post-growth treatment. This Laboratory Grown Diamond was created by High Pressure High Temperature (HPHT) growth process. Type II



Sample Image Used



April 14, 2026
 IGI Report Number **LG791647844**
 ROUND ROSE CUT
 LABORATORY GROWN DIAMOND
 5.88 - 5.93 X 2.63 MM
 Carat Weight **0.73 CARAT**
 Color Grade **D**
 Clarity Grade **VS 2**
 Polish **VERY GOOD**
 Symmetry **VERY GOOD**
 Fluorescence **NONE**
 Inscription(s) **IGI LG791647844**

Comments: As Grown - No indication of post-growth treatment. This Laboratory Grown Diamond was created by High Pressure High Temperature (HPHT) growth process. Type II



April 14, 2026
 IGI Report Number **LG791647844**
 ROUND ROSE CUT
 LABORATORY GROWN DIAMOND
 5.88 - 5.93 X 2.63 MM
 Carat Weight **0.73 CARAT**
 Color Grade **D**
 Clarity Grade **VS 2**
 Polish **VERY GOOD**
 Symmetry **VERY GOOD**
 Fluorescence **NONE**
 Inscription(s) **IGI LG791647844**

Comments: As Grown - No indication of post-growth treatment. This Laboratory Grown Diamond was created by High Pressure High Temperature (HPHT) growth process. Type II



THIS DOCUMENT WAS PRODUCED WITH THE FOLLOWING SECURITY MEASURES: SPECIAL DOCUMENT PAPER, INK SCREENS, WATERMARK, BACKGROUND DESIGNS, HOLOGRAM AND OTHER SECURITY FEATURES NOT LISTED AND DO EXCEED DOCUMENT SECURITY INDUSTRY GUIDELINES.