



ELECTRONIC COPY

LG791647543 Report verification at igi.org



April 13, 2026 IGI Report Number LG791647543 Description LABORATORY GROWN DIAMOND Shape and Cutting Style CUSHION MODIFIED BRILLIANT Measurements 8.94 X 6.57 X 4.45 MM GRADING RESULTS Carat Weight 2.04 CARATS Color Grade D Clarity Grade VVS 2

LABORATORY GROWN DIAMOND REPORT

April 13, 2026 IGI Report Number LG791647543 Description LABORATORY GROWN DIAMOND Shape and Cutting Style CUSHION MODIFIED BRILLIANT Measurements 8.94 X 6.57 X 4.45 MM

GRADING RESULTS

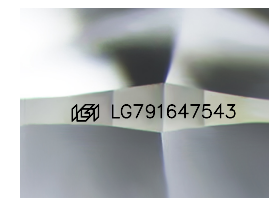
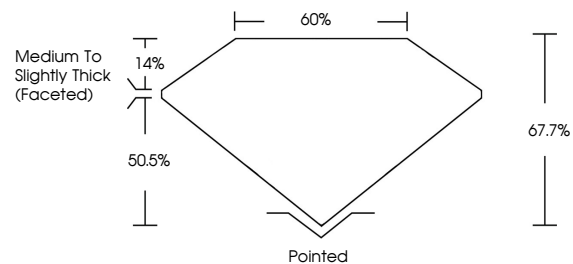
Carat Weight 2.04 CARATS Color Grade D Clarity Grade VVS 2

ADDITIONAL GRADING INFORMATION

Polish EXCELLENT Symmetry EXCELLENT Fluorescence NONE Inscription(s) IGI LG791647543

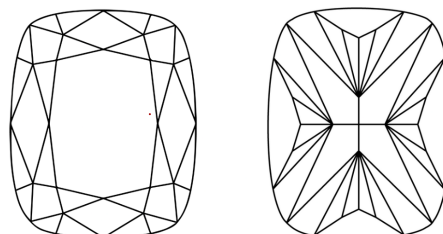
Comments: This Laboratory Grown Diamond was created by Chemical Vapor Deposition (CVD) growth process. Type IIa

PROPORTIONS



Sample Image Used

CLARITY CHARACTERISTICS



KEY TO SYMBOLS

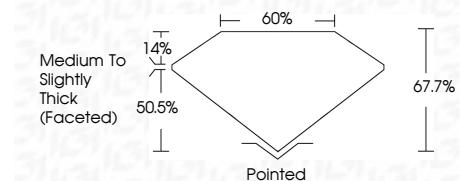
Red symbols indicate internal characteristics. Green symbols indicate external characteristics.

COLOR

D E F G H I J Faint Very Light Light

CLARITY

FL IF VVS 1-2 VS 1-2 SI 1-2 I 1-3 Flawless Internally Flawless Very Very Slightly Included Very Slightly Included Slightly Included Included



ADDITIONAL GRADING INFORMATION

Polish EXCELLENT Symmetry EXCELLENT Fluorescence NONE Inscription(s) IGI LG791647543 Comments: This Laboratory Grown Diamond was created by Chemical Vapor Deposition (CVD) growth process. Type IIa



Certified SUSTAINABILITY RATED DIAMOND SCS GLOBAL SERVICES All certified diamonds come with an individual certificate, ONLY available at an accredited retailer



FOR THE SUSTAINABILITY RATED CERTIFICATE, SCAN HERE

April 13, 2026 IGI Report No LG791647543 CUSHION MODIFIED BRILLIANT 8.94 X 6.57 X 4.45 MM 2.04 CARATS D VVS 2 67.7% 50.5% Medium to Slightly Thick (Faceted) Pointed EXCELLENT EXCELLENT NONE IGI LG791647543 Comments: This Laboratory Grown Diamond was created by Chemical Vapor Deposition (CVD) growth process. Type IIa