



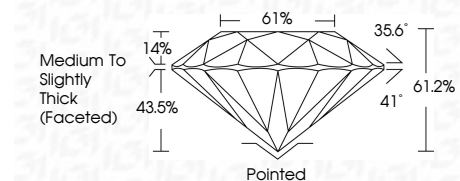
ELECTRONIC COPY

LG791647265
Report verification at igi.org



April 11, 2026
IGI Report Number **LG791647265**
Description **LABORATORY GROWN DIAMOND**
Shape and Cutting Style **ROUND BRILLIANT**
Measurements **7.29 - 7.34 X 4.48 MM**

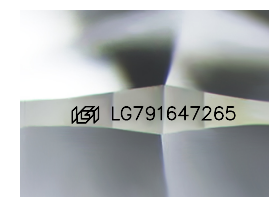
GRADING RESULTS
Carat Weight **1.50 CARAT**
Color Grade **F**
Clarity Grade **VS 2**
Cut Grade **EXCELLENT**



ADDITIONAL GRADING INFORMATION
Polish **EXCELLENT**
Symmetry **EXCELLENT**
Fluorescence **NONE**
Inscription(s) **IGI LG791647265**
Comments: This Laboratory Grown Diamond was created by Chemical Vapor Deposition (CVD) growth process. Type IIa

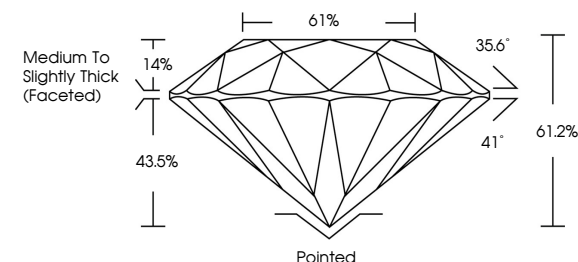


April 11, 2026
IGI Report No LG791647265
ROUND BRILLIANT
7.29 - 7.34 X 4.48 MM
1.50 CARAT
F
VS 2
EXCELLENT
61.2%
61%
Medium To Slightly Thick (Faceted)
Pointed
EXCELLENT
EXCELLENT
NONE
IGI LG791647265
Comments: This Laboratory Grown Diamond was created by Chemical Vapor Deposition (CVD) growth process. Type IIa

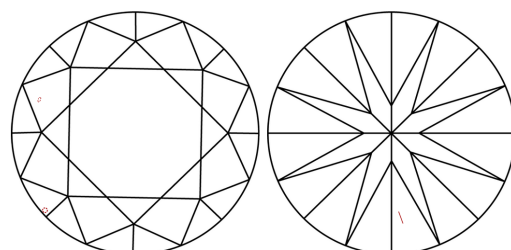


Sample Image Used

PROPORTIONS



CLARITY CHARACTERISTICS



KEY TO SYMBOLS

Red symbols indicate internal characteristics.
Green symbols indicate external characteristics.

COLOR

D E F G H I J Faint Very Light Light

CLARITY

FL	IF	VS ¹⁻²	VS ¹⁻²	SI ¹⁻²	I ¹⁻³
Flawless	Internally Flawless	Very Very Slightly Included	Very Slightly Included	Slightly Included	Included

