



**ELECTRONIC COPY**

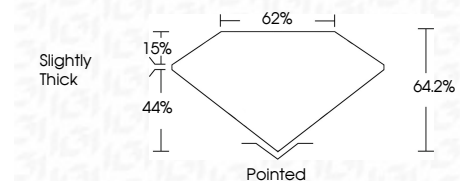
LG791644579  
Report verification at igi.org



April 28, 2026  
IGI Report Number **LG791644579**  
Description **LABORATORY GROWN DIAMOND**  
Shape and Cutting Style **CUT CORNERED  
RECTANGULAR MODIFIED  
BRILLIANT**  
Measurements **7.49 X 4.94 X 3.17 MM**

**GRADING RESULTS**

Carat Weight **1.02 CARAT**  
Color Grade **FANCY INTENSE PINK**  
Clarity Grade **VVS 2**



**ADDITIONAL GRADING INFORMATION**

Polish **EXCELLENT**  
Symmetry **EXCELLENT**  
Fluorescence **SLIGHT**  
Inscription(s) **IGI LG791644579**  
Comments: This Laboratory Grown Diamond was created by Chemical Vapor Deposition (CVD) growth process. Indications of post-growth treatment.



April 28, 2026  
IGI Report No LG791644579  
CUT CORNERED RECT. MODIFIED BRILLIANT  
7.49 X 4.94 X 3.17 MM  
1.02 CARAT  
FANCY INTENSE PINK  
VVS 2  
44%  
62%  
Slightly Thick  
Pointed  
EXCELLENT  
EXCELLENT  
SLIGHT  
IGI LG791644579  
Comments: This Laboratory Grown Diamond was created by Chemical Vapor Deposition (CVD) growth process. Indications of post-growth treatment.

**LABORATORY GROWN DIAMOND REPORT**

April 28, 2026  
IGI Report Number **LG791644579**  
Description **LABORATORY GROWN DIAMOND**  
Shape and Cutting Style **CUT CORNERED RECTANGULAR  
MODIFIED BRILLIANT**  
Measurements **7.49 X 4.94 X 3.17 MM**

**GRADING RESULTS**

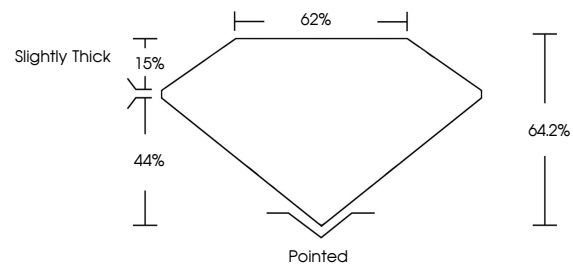
Carat Weight **1.02 CARAT**  
Color Grade **FANCY INTENSE PINK**  
Clarity Grade **VVS 2**

**ADDITIONAL GRADING INFORMATION**

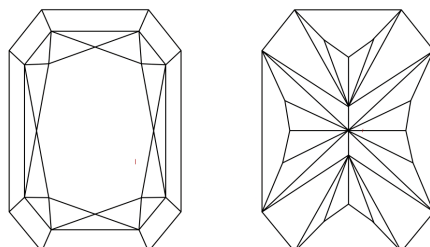
Polish **EXCELLENT**  
Symmetry **EXCELLENT**  
Fluorescence **SLIGHT**  
Inscription(s) **IGI LG791644579**

Comments: This Laboratory Grown Diamond was created by Chemical Vapor Deposition (CVD) growth process. Indications of post-growth treatment.

**PROPORTIONS**

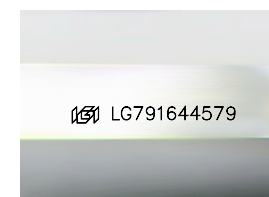


**CLARITY CHARACTERISTICS**



**KEY TO SYMBOLS**

Red symbols indicate internal characteristics.  
Green symbols indicate external characteristics.



Sample Image Used

**COLOR**

D E F G H I J Faint Very Light Light

**CLARITY**

FL	IF	VVS <sup>1-2</sup>	VS <sup>1-2</sup>	SI <sup>1-2</sup>	I <sup>1-3</sup>
Flawless	Internally Flawless	Very Very Slightly Included	Very Slightly Included	Slightly Included	Included