



ELECTRONIC COPY

LG791644317
Report verification at igi.org



April 27, 2026
IGI Report Number **LG791644317**
Description **LABORATORY GROWN DIAMOND**
Shape and Cutting Style **SQUARE CUSHION MODIFIED BRILLIANT**
Measurements **6.80 X 6.59 X 4.51 MM**
GRADING RESULTS
Carat Weight **1.58 CARAT**
Color Grade **FANCY VIVID BLUE**
Clarity Grade **VVS 2**

LABORATORY GROWN DIAMOND REPORT

April 27, 2026
IGI Report Number **LG791644317**
Description **LABORATORY GROWN DIAMOND**
Shape and Cutting Style **SQUARE CUSHION MODIFIED BRILLIANT**
Measurements **6.80 X 6.59 X 4.51 MM**

GRADING RESULTS

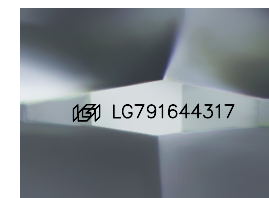
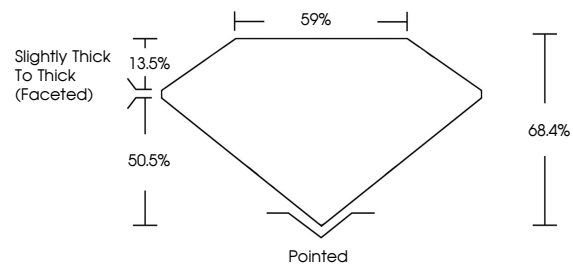
Carat Weight **1.58 CARAT**
Color Grade **FANCY VIVID BLUE**
Clarity Grade **VVS 2**

ADDITIONAL GRADING INFORMATION

Polish **EXCELLENT**
Symmetry **EXCELLENT**
Fluorescence **NONE**
Inscription(s) **IGI LG791644317**

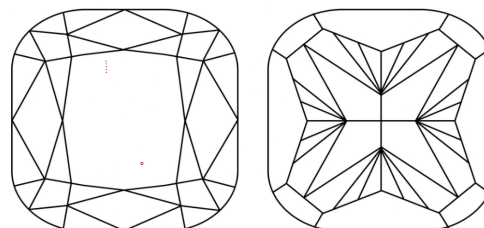
Comments: This Laboratory Grown Diamond was created by Chemical Vapor Deposition (CVD) growth process.
Indications of post-growth treatment.

PROPORTIONS



Sample Image Used

CLARITY CHARACTERISTICS



KEY TO SYMBOLS

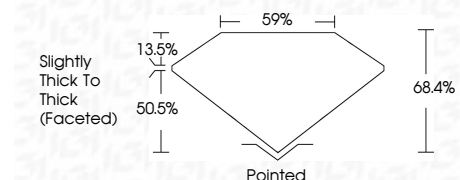
Red symbols indicate internal characteristics.
Green symbols indicate external characteristics.

COLOR

D E F G H I J Faint Very Light Light

CLARITY

FL	IF	VVS ¹⁻²	VS ¹⁻²	SI ¹⁻²	I ¹⁻³
Flawless	Internally Flawless	Very Very Slightly Included	Very Slightly Included	Slightly Included	Included



ADDITIONAL GRADING INFORMATION

Polish **EXCELLENT**
Symmetry **EXCELLENT**
Fluorescence **NONE**
Inscription(s) **IGI LG791644317**
Comments: This Laboratory Grown Diamond was created by Chemical Vapor Deposition (CVD) growth process.
Indications of post-growth treatment.



April 27, 2026
IGI Report No **LG791644317**
SQUARE CUSHION MODIFIED BRILLIANT
6.80 X 6.59 X 4.51 MM
Carat Weight **1.58 CARAT**
Color Grade **FANCY VIVID BLUE**
Clarity Grade **VVS 2**
Table **59%**
Depth **68.4%**
Girdle **Slightly Thick To Thick (Faceted)**
Culet **Pointed**
Polish **EXCELLENT**
Symmetry **EXCELLENT**
Fluorescence **NONE**
Inscription(s) **IGI LG791644317**

Comments: This Laboratory Grown Diamond was created by Chemical Vapor Deposition (CVD) growth process.
Indications of post-growth treatment.