



ELECTRONIC COPY

LG791644285
Report verification at igi.org



April 25, 2026
IGI Report Number **LG791644285**
Description **LABORATORY GROWN DIAMOND**
Shape and Cutting Style **PRINCESS CUT**
Measurements **8.70 X 8.66 X 5.96 MM**
GRADING RESULTS
Carat Weight **4.02 CARATS**
Color Grade **FANCY VIVID BLUE**
Clarity Grade **VS 1**

April 25, 2026
IGI Report Number **LG791644285**
Description **LABORATORY GROWN DIAMOND**
Shape and Cutting Style **PRINCESS CUT**
Measurements **8.70 X 8.66 X 5.96 MM**

GRADING RESULTS

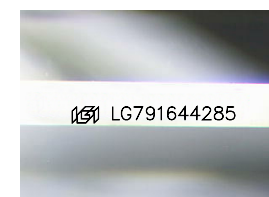
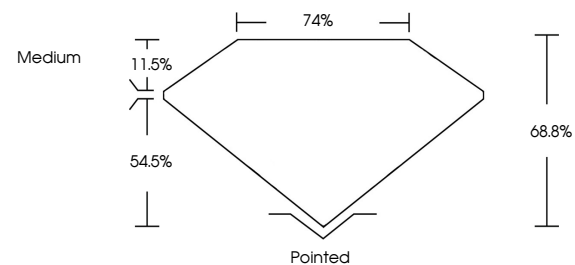
Carat Weight **4.02 CARATS**
Color Grade **FANCY VIVID BLUE**
Clarity Grade **VS 1**

ADDITIONAL GRADING INFORMATION

Polish **EXCELLENT**
Symmetry **EXCELLENT**
Fluorescence **NONE**
Inscription(s) **IGI LG791644285**

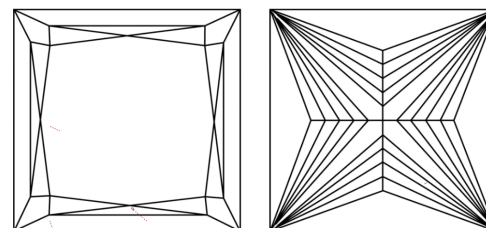
Comments: This Laboratory Grown Diamond was created by Chemical Vapor Deposition (CVD) growth process.
Indications of post-growth treatment.

PROPORTIONS



Sample Image Used

CLARITY CHARACTERISTICS



KEY TO SYMBOLS

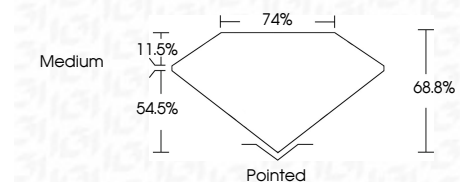
Red symbols indicate internal characteristics.
Green symbols indicate external characteristics.

COLOR

D E F G H I J Faint Very Light Light

CLARITY

FL	IF	VS ¹⁻²	VS ¹⁻²	SI ¹⁻²	I ¹⁻³
Flawless	Internally Flawless	Very Very Slightly Included	Very Slightly Included	Slightly Included	Included



ADDITIONAL GRADING INFORMATION

Polish **EXCELLENT**
Symmetry **EXCELLENT**
Fluorescence **NONE**
Inscription(s) **IGI LG791644285**
Comments: This Laboratory Grown Diamond was created by Chemical Vapor Deposition (CVD) growth process.
Indications of post-growth treatment.



April 25, 2026
IGI Report No LG791644285
PRINCESS CUT
4.02 CARATS
Carat Weight **8.70 X 8.66 X 5.96 MM**
Color Grade **FANCY VIVID BLUE**
Clarity Grade **VS 1**
Depth **68.8%**
Table **74%**
Girdle **Medium**
Culet **Pointed**
Polish **EXCELLENT**
Symmetry **EXCELLENT**
Fluorescence **NONE**
Inscription(s) **IGI LG791644285**
Comments: This Laboratory Grown Diamond was created by Chemical Vapor Deposition (CVD) growth process.
Indications of post-growth treatment.