



**ELECTRONIC COPY**

LG791644257  
Report verification at igi.org



April 27, 2026  
IGI Report Number **LG791644257**  
Description **LABORATORY GROWN DIAMOND**  
Shape and Cutting Style **SQUARE CUSHION MODIFIED BRILLIANT**  
Measurements **6.62 X 6.29 X 4.31 MM**  
**GRADING RESULTS**  
Carat Weight **1.51 CARAT**  
Color Grade **FANCY VIVID BLUE**  
Clarity Grade **VS 1**

April 27, 2026  
IGI Report Number **LG791644257**  
Description **LABORATORY GROWN DIAMOND**  
Shape and Cutting Style **SQUARE CUSHION MODIFIED BRILLIANT**  
Measurements **6.62 X 6.29 X 4.31 MM**

**GRADING RESULTS**

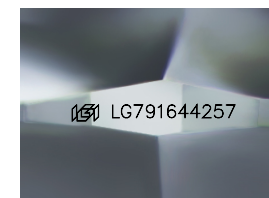
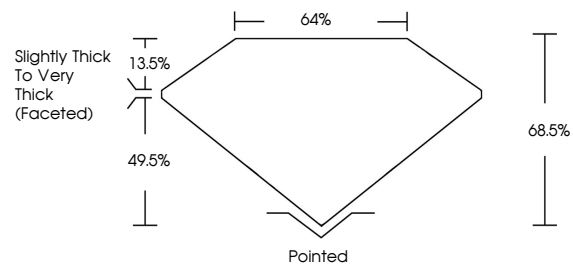
Carat Weight **1.51 CARAT**  
Color Grade **FANCY VIVID BLUE**  
Clarity Grade **VS 1**

**ADDITIONAL GRADING INFORMATION**

Polish **EXCELLENT**  
Symmetry **EXCELLENT**  
Fluorescence **NONE**  
Inscription(s) **IGI LG791644257**

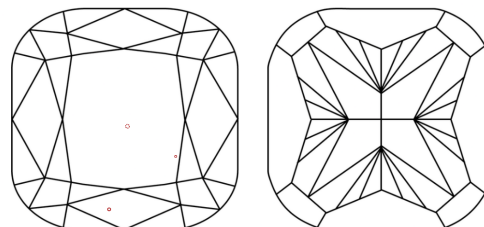
Comments: This Laboratory Grown Diamond was created by Chemical Vapor Deposition (CVD) growth process.  
Indications of post-growth treatment.

**PROPORTIONS**



Sample Image Used

**CLARITY CHARACTERISTICS**



**KEY TO SYMBOLS**

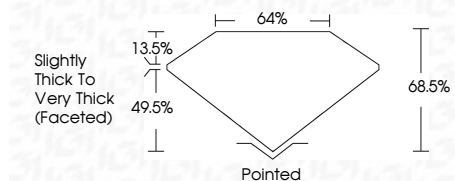
Red symbols indicate internal characteristics.  
Green symbols indicate external characteristics.

**COLOR**

D E F G H I J Faint Very Light Light

**CLARITY**

FL	IF	VS <sup>1-2</sup>	VS <sup>1-2</sup>	SI <sup>1-2</sup>	I <sup>1-3</sup>
Flawless	Internally Flawless	Very Very Slightly Included	Very Slightly Included	Slightly Included	Included



**ADDITIONAL GRADING INFORMATION**

Polish **EXCELLENT**  
Symmetry **EXCELLENT**  
Fluorescence **NONE**  
Inscription(s) **IGI LG791644257**  
Comments: This Laboratory Grown Diamond was created by Chemical Vapor Deposition (CVD) growth process.  
Indications of post-growth treatment.



April 27, 2026  
IGI Report No LG791644257  
**SQUARE CUSHION MODIFIED BRILLIANT**  
6.62 X 6.29 X 4.31 MM  
1.51 CARAT  
FANCY VIVID BLUE  
VS 1  
68.5%  
49.5%  
Slightly Thick To Very Thick (Faceted)  
Pointed  
EXCELLENT  
EXCELLENT  
NONE  
IGI LG791644257  
Comments: This Laboratory Grown Diamond was created by Chemical Vapor Deposition (CVD) growth process.  
Indications of post-growth treatment.