



ELECTRONIC COPY

LG791644122
Report verification at igi.org



April 23, 2026
IGI Report Number **LG791644122**
Description **LABORATORY GROWN DIAMOND**
Shape and Cutting Style **ROUND BRILLIANT**
Measurements **8.23 - 8.30 X 4.96 MM**
GRADING RESULTS
Carat Weight **2.06 CARATS**
Color Grade **FANCY INTENSE YELLOW**
Clarity Grade **VS 1**
Cut Grade **IDEAL**

April 23, 2026
IGI Report Number **LG791644122**
Description **LABORATORY GROWN DIAMOND**
Shape and Cutting Style **ROUND BRILLIANT**
Measurements **8.23 - 8.30 X 4.96 MM**

GRADING RESULTS

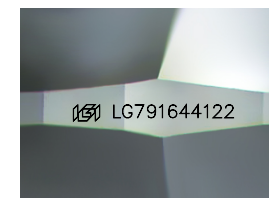
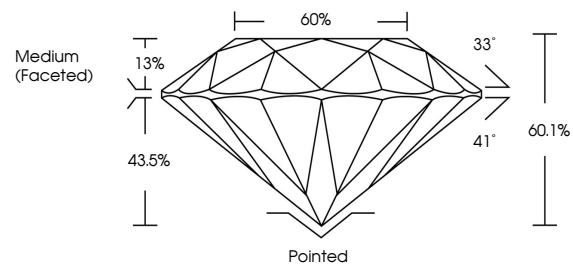
Carat Weight **2.06 CARATS**
Color Grade **FANCY INTENSE YELLOW**
Clarity Grade **VS 1**
Cut Grade **IDEAL**

ADDITIONAL GRADING INFORMATION

Polish **EXCELLENT**
Symmetry **EXCELLENT**
Fluorescence **NONE**
Inscription(s) **IGI LG791644122**

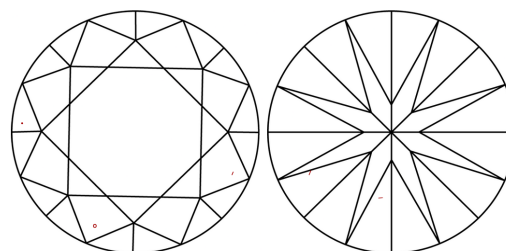
Comments: This Laboratory Grown Diamond was created by Chemical Vapor Deposition (CVD) growth process.

PROPORTIONS



Sample Image Used

CLARITY CHARACTERISTICS



KEY TO SYMBOLS

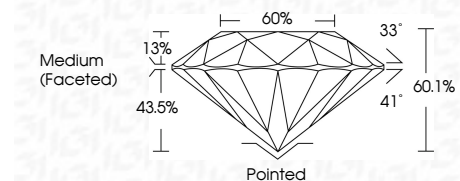
Red symbols indicate internal characteristics.
Green symbols indicate external characteristics.

COLOR

D E F G H I J Faint Very Light Light

CLARITY

FL	IF	VS ¹⁻²	VS ¹⁻²	SI ¹⁻²	I ¹⁻³
Flawless	Internally Flawless	Very Very Slightly Included	Very Slightly Included	Slightly Included	Included



ADDITIONAL GRADING INFORMATION

Polish **EXCELLENT**
Symmetry **EXCELLENT**
Fluorescence **NONE**
Inscription(s) **IGI LG791644122**
Comments: This Laboratory Grown Diamond was created by Chemical Vapor Deposition (CVD) growth process.



April 23, 2026
IGI Report No LG791644122
ROUND BRILLIANT
8.23 - 8.30 X 4.96 MM
Carat Weight **2.06 CARATS**
Color Grade **FANCY INTENSE YELLOW**
Clarity Grade **VS 1**
Depth **IDEAL**
Table **60.1%**
Girdle **60%**
Medium (Faceted)
Culet **Pointed**
Polish **EXCELLENT**
Symmetry **EXCELLENT**
Fluorescence **NONE**
Inscription(s) **IGI LG791644122**
Comments: This Laboratory Grown Diamond was created by Chemical Vapor Deposition (CVD) growth process.