



ELECTRONIC COPY

LG791643930
Report verification at igi.org



April 23, 2026

IGI Report Number **LG791643930**

Description **LABORATORY GROWN DIAMOND**

Shape and Cutting Style **TRIANGULAR BRILLIANT**

Measurements **7.02 X 6.95 X 3.80 MM**

GRADING RESULTS

Carat Weight **1.01 CARAT**

Color Grade **FANCY INTENSE PINK**

Clarity Grade **VS 2**

April 23, 2026

IGI Report Number **LG791643930**

Description **LABORATORY GROWN DIAMOND**

Shape and Cutting Style **TRIANGULAR BRILLIANT**

Measurements **7.02 X 6.95 X 3.80 MM**

GRADING RESULTS

Carat Weight **1.01 CARAT**

Color Grade **FANCY INTENSE PINK**

Clarity Grade **VS 2**

ADDITIONAL GRADING INFORMATION

Polish **GOOD**

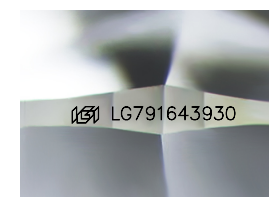
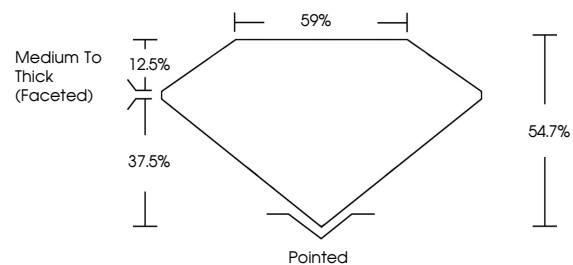
Symmetry **VERY GOOD**

Fluorescence **SLIGHT**

Inscription(s) **LG791643930**

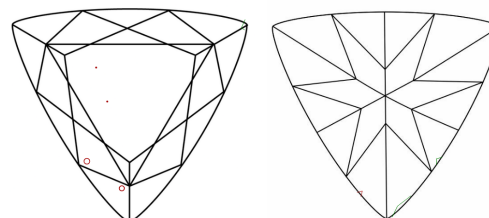
Comments: This Laboratory Grown Diamond was created by Chemical Vapor Deposition (CVD) growth process. Indications of post-growth treatment.

PROPORTIONS



Sample Image Used

CLARITY CHARACTERISTICS



KEY TO SYMBOLS

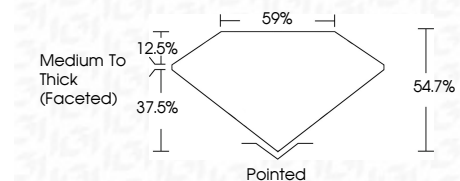
Red symbols indicate internal characteristics.
Green symbols indicate external characteristics.

COLOR

D E F G H I J Faint Very Light Light

CLARITY

FL	IF	VS ¹⁻²	VS ¹⁻²	SI ¹⁻²	I ¹⁻³
Flawless	Internally Flawless	Very Very Slightly Included	Very Slightly Included	Slightly Included	Included



ADDITIONAL GRADING INFORMATION

Polish **GOOD**

Symmetry **VERY GOOD**

Fluorescence **SLIGHT**

Inscription(s) **LG791643930**

Comments: This Laboratory Grown Diamond was created by Chemical Vapor Deposition (CVD) growth process. Indications of post-growth treatment.



April 23, 2026
IGI Report No LG791643930
TRIANGULAR BRILLIANT
7.02 X 6.95 X 3.80 MM
1.01 CARAT
FANCY INTENSE PINK
Color Grade
Depth 54.7%
Table 12.5%
Girdle 59%
Medium To Thick (Faceted)
Pointed
Polish **GOOD**
Symmetry **VERY GOOD**
Fluorescence **SLIGHT**
Inscription(s) **LG791643930**
Comments: This Laboratory Grown Diamond was created by Chemical Vapor Deposition (CVD) growth process. Indications of post-growth treatment.