



**ELECTRONIC COPY**

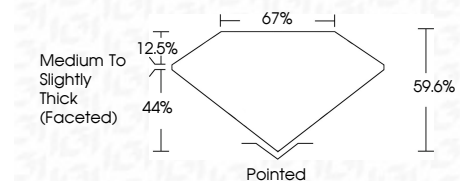
LG791643223  
Report verification at igi.org



April 22, 2026  
IGI Report Number **LG791643223**  
Description **LABORATORY GROWN DIAMOND**  
Shape and Cutting Style **ROUND MODIFIED BRILLIANT**  
Measurements **6.33 - 6.33 X 3.77 MM**

**GRADING RESULTS**

Carat Weight **1.00 CARAT**  
Color Grade **F**  
Clarity Grade **VS 2**



**ADDITIONAL GRADING INFORMATION**

Polish **EXCELLENT**  
Symmetry **EXCELLENT**  
Fluorescence **NONE**  
Inscription(s) **(IGI) LG791643223**  
Comments: This Laboratory Grown Diamond was created by Chemical Vapor Deposition (CVD) growth process. Type IIa



April 22, 2026  
IGI Report No LG791643223  
**ROUND MODIFIED BRILLIANT**  
6.33 - 6.33 X 3.77 MM  
1.00 CARAT  
F  
VS 2  
69.6%  
44%  
67%  
Medium to Slightly Thick (Faceted)  
Pointed  
EXCELLENT  
EXCELLENT  
NONE  
(IGI) LG791643223  
Comments: This Laboratory Grown Diamond was created by Chemical Vapor Deposition (CVD) growth process. Type IIa

April 22, 2026  
IGI Report Number **LG791643223**  
Description **LABORATORY GROWN DIAMOND**  
Shape and Cutting Style **ROUND MODIFIED BRILLIANT**  
Measurements **6.33 - 6.33 X 3.77 MM**

**GRADING RESULTS**

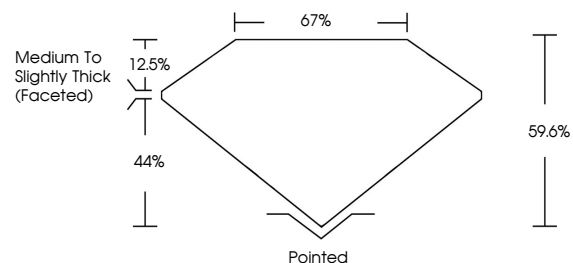
Carat Weight **1.00 CARAT**  
Color Grade **F**  
Clarity Grade **VS 2**

**ADDITIONAL GRADING INFORMATION**

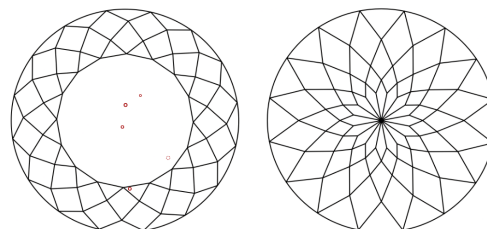
Polish **EXCELLENT**  
Symmetry **EXCELLENT**  
Fluorescence **NONE**  
Inscription(s) **(IGI) LG791643223**

Comments: This Laboratory Grown Diamond was created by Chemical Vapor Deposition (CVD) growth process. Type IIa

**PROPORTIONS**

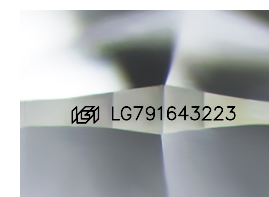


**CLARITY CHARACTERISTICS**



**KEY TO SYMBOLS**

Red symbols indicate internal characteristics.  
Green symbols indicate external characteristics.



Sample Image Used

**COLOR**

D E F G H I J Faint Very Light Light

**CLARITY**

FL	IF	VS <sup>1-2</sup>	VS <sup>1-2</sup>	SI <sup>1-2</sup>	I <sup>1-3</sup>
Flawless	Internally Flawless	Very Very Slightly Included	Very Slightly Included	Slightly Included	Included

