



**INTERNATIONAL  
GEMOLOGICAL  
INSTITUTE**

**LABORATORY GROWN DIAMOND REPORT**

April 21, 2026  
 IGI Report Number **LG791642348**  
 Description **LABORATORY GROWN DIAMOND**  
 Shape and Cutting Style **ROUND BRILLIANT**  
 Measurements **6.24 - 6.26 X 3.92 MM**

**GRADING RESULTS**

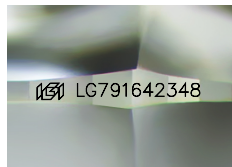
Carat Weight **0.95 CARAT**  
 Color Grade **FANCY INTENSE PINK**  
 Clarity Grade **VVS 2**  
 Cut Grade **EXCELLENT**

**ADDITIONAL GRADING INFORMATION**

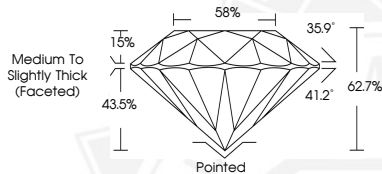
Polish **EXCELLENT**  
 Symmetry **EXCELLENT**  
 Fluorescence **SLIGHT**  
 Inscription(s) **IGI LG791642348**

Comments: This Laboratory Grown Diamond was created by High Pressure High Temperature (HPHT) growth process.

**ELECTRONIC COPY**



Sample Image Used



April 21, 2026  
 IGI Report Number **LG791642348**  
 ROUND BRILLIANT  
 LABORATORY GROWN DIAMOND  
 6.24 - 6.26 X 3.92 MM  
 Carat Weight **0.95 CARAT**  
 Color Grade **FANCY INTENSE PINK**  
 Clarity Grade **VVS 2**  
 Cut Grade **EXCELLENT**  
 Polish **EXCELLENT**  
 Symmetry **EXCELLENT**  
 Fluorescence **SLIGHT**  
 Inscription(s) **IGI LG791642348**

Comments: This Laboratory Grown Diamond was created by High Pressure High Temperature (HPHT) growth process.



April 21, 2026  
 IGI Report Number **LG791642348**  
 ROUND BRILLIANT  
 LABORATORY GROWN DIAMOND  
 6.24 - 6.26 X 3.92 MM  
 Carat Weight **0.95 CARAT**  
 Color Grade **FANCY INTENSE PINK**  
 Clarity Grade **VVS 2**  
 Cut Grade **EXCELLENT**  
 Polish **EXCELLENT**  
 Symmetry **EXCELLENT**  
 Fluorescence **SLIGHT**  
 Inscription(s) **IGI LG791642348**

Comments: This Laboratory Grown Diamond was created by High Pressure High Temperature (HPHT) growth process.



THIS DOCUMENT WAS PRODUCED WITH THE FOLLOWING SECURITY MEASURES: SPECIAL DOCUMENT PAPER, INK SCREENS, WATERMARK, BACKGROUND DESIGNS, HOLOGRAM AND OTHER SECURITY FEATURES NOT LISTED AND DO EXCEED DOCUMENT SECURITY INDUSTRY GUIDELINES.

For terms & conditions and to verify this report, please visit [www.igi.org](http://www.igi.org)