



**ELECTRONIC COPY**

LG791642081  
Report verification at igi.org



April 18, 2026  
IGI Report Number **LG791642081**  
Description **LABORATORY GROWN DIAMOND**  
Shape and Cutting Style **SQUARE CUSHION MODIFIED BRILLIANT**  
Measurements **9.48 X 9.21 X 6.22 MM**  
**GRADING RESULTS**  
Carat Weight **5.01 CARATS**  
Color Grade **G**  
Clarity Grade **VS 1**

April 18, 2026  
IGI Report Number **LG791642081**  
Description **LABORATORY GROWN DIAMOND**  
Shape and Cutting Style **SQUARE CUSHION MODIFIED BRILLIANT**  
Measurements **9.48 X 9.21 X 6.22 MM**

**GRADING RESULTS**

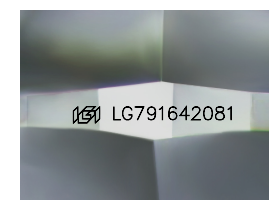
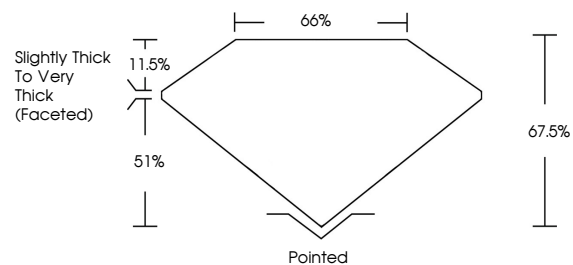
Carat Weight **5.01 CARATS**  
Color Grade **G**  
Clarity Grade **VS 1**

**ADDITIONAL GRADING INFORMATION**

Polish **EXCELLENT**  
Symmetry **EXCELLENT**  
Fluorescence **NONE**  
Inscription(s) **IGI LG791642081**

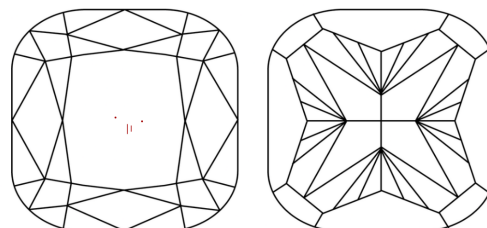
Comments: This Laboratory Grown Diamond was created by Chemical Vapor Deposition (CVD) growth process. Type IIa

**PROPORTIONS**



Sample Image Used

**CLARITY CHARACTERISTICS**



**KEY TO SYMBOLS**

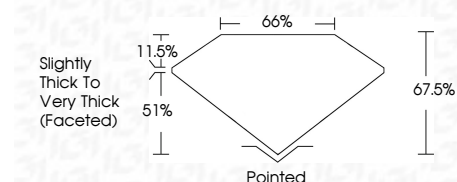
Red symbols indicate internal characteristics.  
Green symbols indicate external characteristics.

**COLOR**

D E F G H I J Faint Very Light Light

**CLARITY**

FL	IF	VS <sup>1-2</sup>	VS <sup>1-2</sup>	SI <sup>1-2</sup>	I <sup>1-3</sup>
Flawless	Internally Flawless	Very Very Slightly Included	Very Slightly Included	Slightly Included	Included



**ADDITIONAL GRADING INFORMATION**

Polish **EXCELLENT**  
Symmetry **EXCELLENT**  
Fluorescence **NONE**  
Inscription(s) **IGI LG791642081**  
Comments: This Laboratory Grown Diamond was created by Chemical Vapor Deposition (CVD) growth process. Type IIa



April 18, 2026  
IGI Report No LG791642081  
**SQUARE CUSHION MODIFIED BRILLIANT**  
9.48 X 9.21 X 6.22 MM  
Carat Weight **5.01 CARATS**  
Color Grade **G**  
Clarity Grade **VS 1**  
Table **67.0%**  
Girdle **65%**  
Slightly Thick To Very Thick (Faceted)  
Culet **Pointed**  
Polish **EXCELLENT**  
Symmetry **EXCELLENT**  
Fluorescence **NONE**  
Inscription(s) **IGI LG791642081**  
Comments: This Laboratory Grown Diamond was created by Chemical Vapor Deposition (CVD) growth process. Type IIa