



ELECTRONIC COPY

LG791641947
Report verification at igi.org

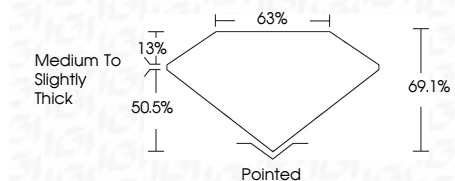


April 18, 2026
IGI Report Number **LG791641947**
Description **LABORATORY GROWN DIAMOND**
Shape and Cutting Style **CUT CORNERED
RECTANGULAR MODIFIED
BRILLIANT**

Measurements **8.09 X 5.44 X 3.76 MM**

GRADING RESULTS

Carat Weight **1.51 CARAT**
Color Grade **FANCY VIVID BLUE**
Clarity Grade **VS 1**



ADDITIONAL GRADING INFORMATION

Polish **EXCELLENT**
Symmetry **EXCELLENT**
Fluorescence **NONE**
Inscription(s) **IGI LG791641947**

Comments: This Laboratory Grown Diamond was created by Chemical Vapor Deposition (CVD) growth process. Indications of post-growth treatment.



IGI



LABORATORY GROWN DIAMOND REPORT

April 18, 2026
IGI Report Number **LG791641947**
Description **LABORATORY GROWN DIAMOND**
Shape and Cutting Style **CUT CORNERED RECTANGULAR
MODIFIED BRILLIANT**
Measurements **8.09 X 5.44 X 3.76 MM**

GRADING RESULTS

Carat Weight **1.51 CARAT**
Color Grade **FANCY VIVID BLUE**
Clarity Grade **VS 1**

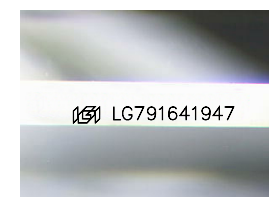
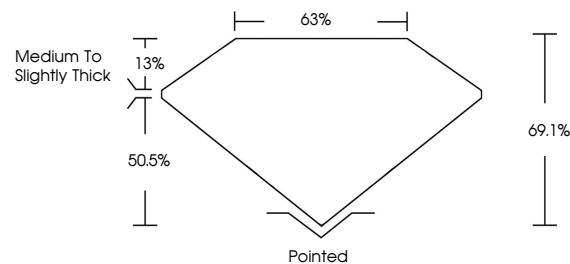
ADDITIONAL GRADING INFORMATION

Polish **EXCELLENT**
Symmetry **EXCELLENT**
Fluorescence **NONE**

Inscription(s) **IGI LG791641947**

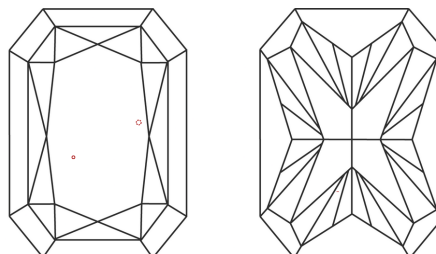
Comments: This Laboratory Grown Diamond was created by Chemical Vapor Deposition (CVD) growth process. Indications of post-growth treatment.

PROPORTIONS



Sample Image Used

CLARITY CHARACTERISTICS



KEY TO SYMBOLS

Red symbols indicate internal characteristics.
Green symbols indicate external characteristics.

COLOR

D E F G H I J Faint Very Light Light

CLARITY

FL	IF	VS ¹⁻²	VS ¹⁻²	SI ¹⁻²	I ¹⁻³
Flawless	Internally Flawless	Very Very Slightly Included	Very Slightly Included	Slightly Included	Included

April 18, 2026
IGI Report No LG791641947
CUT CORNERED RECT. MODIFIED BRILLIANT
8.09 X 5.44 X 3.76 MM
1.51 CARAT
FANCY VIVID BLUE
VS 1
69.1%
50.5%
Medium to Slightly Thick
Pointed
EXCELLENT
EXCELLENT
NONE
IGI LG791641947
Comments: This Laboratory Grown Diamond was created by Chemical Vapor Deposition (CVD) growth process. Indications of post-growth treatment.