



**ELECTRONIC COPY**

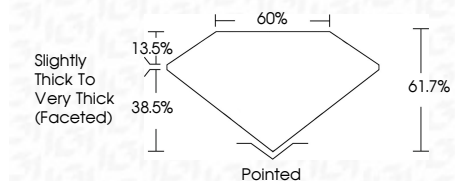
LG791641945  
Report verification at igi.org



April 18, 2026  
IGI Report Number **LG791641945**  
Description **LABORATORY GROWN DIAMOND**

Shape and Cutting Style **PEAR MODIFIED BRILLIANT**  
Measurements **9.13 X 5.61 X 3.46 MM**

**GRADING RESULTS**  
Carat Weight **1.31 CARAT**  
Color Grade **FANCY VIVID GREEN**  
Clarity Grade **VVS 2**



**ADDITIONAL GRADING INFORMATION**  
Polish **VERY GOOD**  
Symmetry **VERY GOOD**  
Fluorescence **VERY SLIGHT**  
Inscription(s) **IGI LG791641945**  
Comments: This Laboratory Grown Diamond was created by Chemical Vapor Deposition (CVD) growth process. Indications of post-growth treatment.

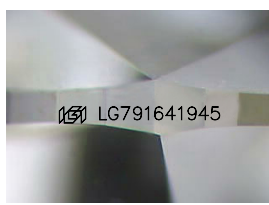
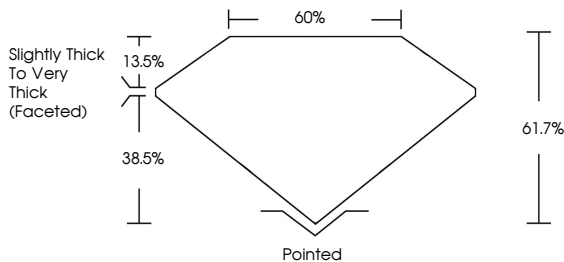


April 18, 2026  
IGI Report No LG791641945  
**PEAR MODIFIED BRILLIANT**  
9.13 X 5.61 X 3.46 MM  
1.31 CARAT  
FANCY VIVID GREEN  
VVS 2  
61.7%  
60%  
Slightly Thick To Very Thick (Faceted)  
Pointed  
VERY GOOD  
VERY GOOD  
VERY SLIGHT  
IGI LG791641945  
Comments: This Laboratory Grown Diamond was created by Chemical Vapor Deposition (CVD) growth process. Indications of post-growth treatment.

April 18, 2026  
IGI Report Number **LG791641945**  
Description **LABORATORY GROWN DIAMOND**  
Shape and Cutting Style **PEAR MODIFIED BRILLIANT**  
Measurements **9.13 X 5.61 X 3.46 MM**  
**GRADING RESULTS**  
Carat Weight **1.31 CARAT**  
Color Grade **FANCY VIVID GREEN**  
Clarity Grade **VVS 2**  
**ADDITIONAL GRADING INFORMATION**  
Polish **VERY GOOD**  
Symmetry **VERY GOOD**  
Fluorescence **VERY SLIGHT**  
Inscription(s) **IGI LG791641945**

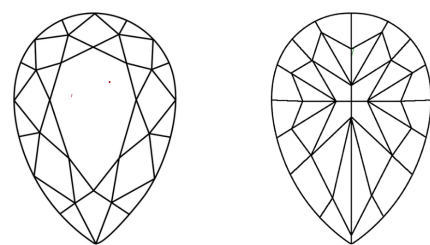
Comments: This Laboratory Grown Diamond was created by Chemical Vapor Deposition (CVD) growth process. Indications of post-growth treatment.

**PROPORTIONS**



Sample Image Used

**CLARITY CHARACTERISTICS**



**KEY TO SYMBOLS**

Red symbols indicate internal characteristics.  
Green symbols indicate external characteristics.

**COLOR**

D	E	F	G	H	I	J	Faint	Very Light	Light
---	---	---	---	---	---	---	-------	------------	-------

**CLARITY**

FL	IF	VVS <sup>1-2</sup>	VS <sup>1-2</sup>	SI <sup>1-2</sup>	I <sup>1-3</sup>
Flawless	Internally Flawless	Very Very Slightly Included	Very Slightly Included	Slightly Included	Included

