



**LABORATORY GROWN DIAMOND REPORT**

April 15, 2026  
 IGI Report Number **LG791640643**  
 Description **LABORATORY GROWN DIAMOND**  
 Shape and Cutting Style **KITE STEP CUT**  
 Measurements **10.24 X 5.93 X 3.85 MM**

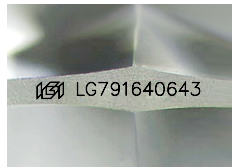
**GRADING RESULTS**

Carat Weight **0.99 CARAT**  
 Color Grade **D**  
 Clarity Grade **VVS 2**

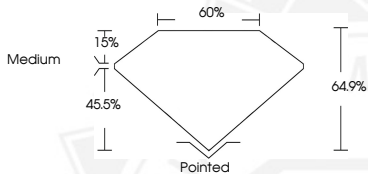
**ADDITIONAL GRADING INFORMATION**

Polish **EXCELLENT**  
 Symmetry **EXCELLENT**  
 Fluorescence **NONE**  
 Inscription(s) **IGI LG791640643**

Comments: This Laboratory Grown Diamond was created by  
 Chemical Vapor Deposition (CVD) growth process.  
 Type IIa



Sample Image Used



April 15, 2026  
 IGI Report Number **LG791640643**  
 KITE STEP CUT  
 LABORATORY GROWN DIAMOND  
 10.24 X 5.93 X 3.85 MM  
 Carat Weight **0.99 CARAT**  
 Color Grade **D**  
 Clarity Grade **VVS 2**  
 Polish **EXCELLENT**  
 Symmetry **EXCELLENT**  
 Fluorescence **NONE**  
 Inscription(s) **IGI LG791640643**

Comments: This Laboratory Grown  
 Diamond was created by  
 Chemical Vapor Deposition (CVD)  
 growth process. Type IIa



April 15, 2026  
 IGI Report Number **LG791640643**  
 KITE STEP CUT  
 LABORATORY GROWN DIAMOND  
 10.24 X 5.93 X 3.85 MM  
 Carat Weight **0.99 CARAT**  
 Color Grade **D**  
 Clarity Grade **VVS 2**  
 Polish **EXCELLENT**  
 Symmetry **EXCELLENT**  
 Fluorescence **NONE**  
 Inscription(s) **IGI LG791640643**

Comments: This Laboratory Grown  
 Diamond was created by  
 Chemical Vapor Deposition (CVD)  
 growth process. Type IIa



THIS DOCUMENT WAS PRODUCED WITH THE FOLLOWING SECURITY MEASURES: SPECIAL DOCUMENT PAPER, INK SCREENS, WATERMARK, BACKGROUND DESIGNS, HOLOGRAM AND OTHER SECURITY FEATURES NOT LISTED AND DO EXCEED DOCUMENT SECURITY INDUSTRY GUIDELINES.