



LABORATORY GROWN DIAMOND REPORT

April 15, 2026
 IGI Report Number **LG791639426**
 Description **LABORATORY GROWN DIAMOND**
 Shape and Cutting Style **HEXAGONAL STEP CUT**
 Measurements **5.48 X 4.79 X 3.07 MM**

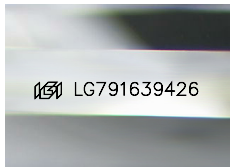
GRADING RESULTS

Carat Weight **0.55 CARAT**
 Color Grade **F**
 Clarity Grade **VS 1**

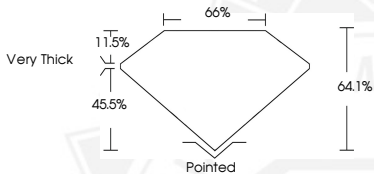
ADDITIONAL GRADING INFORMATION

Polish **VERY GOOD**
 Symmetry **VERY GOOD**
 Fluorescence **NONE**
 Inscription(s) **IGI LG791639426**

Comments: This Laboratory Grown Diamond was created by
 Chemical Vapor Deposition (CVD) growth process.
 Type IIa



Sample Image Used



April 15, 2026
 IGI Report Number **LG791639426**
 HEXAGONAL STEP CUT
 LABORATORY GROWN DIAMOND
 5.48 X 4.79 X 3.07 MM
 Carat Weight **0.55 CARAT**
 Color Grade **F**
 Clarity Grade **VS 1**
 Polish **VERY GOOD**
 Symmetry **VERY GOOD**
 Fluorescence **NONE**
 Inscription(s) **IGI LG791639426**

Comments: This Laboratory Grown
 Diamond was created by
 Chemical Vapor Deposition (CVD)
 growth process. Type IIa



April 15, 2026
 IGI Report Number **LG791639426**
 HEXAGONAL STEP CUT
 LABORATORY GROWN DIAMOND
 5.48 X 4.79 X 3.07 MM
 Carat Weight **0.55 CARAT**
 Color Grade **F**
 Clarity Grade **VS 1**
 Polish **VERY GOOD**
 Symmetry **VERY GOOD**
 Fluorescence **NONE**
 Inscription(s) **IGI LG791639426**

Comments: This Laboratory Grown
 Diamond was created by
 Chemical Vapor Deposition (CVD)
 growth process. Type IIa



THIS DOCUMENT WAS PRODUCED WITH THE FOLLOWING SECURITY MEASURES: SPECIAL DOCUMENT PAPER, INK SCREENS, WATERMARK, BACKGROUND DESIGNS, HOLOGRAM AND OTHER SECURITY FEATURES NOT LISTED AND DO EXCEED DOCUMENT SECURITY INDUSTRY GUIDELINES.