



ELECTRONIC COPY

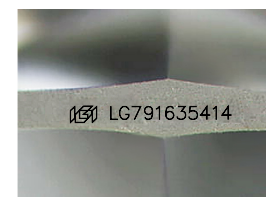
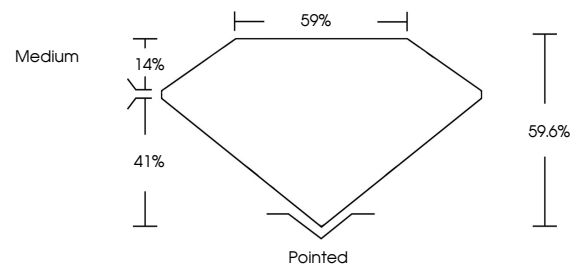
LABORATORY GROWN DIAMOND REPORT

April 16, 2026
IGI Report Number **LG791635414**
Description **LABORATORY GROWN DIAMOND**
Shape and Cutting Style **KITE STEP CUT**
Measurements **10.49 X 5.94 X 3.54 MM**
GRADING RESULTS
Carat Weight **1.00 CARAT**
Color Grade **F**
Clarity Grade **VS 1**

ADDITIONAL GRADING INFORMATION

Polish **EXCELLENT**
Symmetry **EXCELLENT**
Fluorescence **NONE**
Inscription(s) **IGI LG791635414**
Comments: This Laboratory Grown Diamond was created by Chemical Vapor Deposition (CVD) growth process.
Type IIa

PROPORTIONS



Sample Image Used

COLOR

D E F G H I J Faint Very Light Light

CLARITY

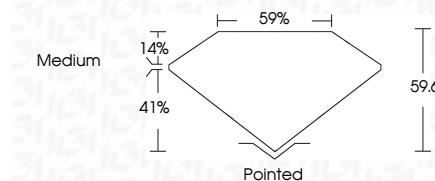
FL	IF	VS ¹⁻²	VS ¹⁻²	SI ¹⁻²	I ¹⁻³
Flawless	Internally Flawless	Very Very Slightly Included	Very Slightly Included	Slightly Included	Included



April 16, 2026
IGI Report Number **LG791635414**
Description **LABORATORY GROWN DIAMOND**
Shape and Cutting Style **KITE STEP CUT**
Measurements **10.49 X 5.94 X 3.54 MM**
GRADING RESULTS
Carat Weight **1.00 CARAT**
Color Grade **F**
Clarity Grade **VS 1**

ADDITIONAL GRADING INFORMATION

Polish **EXCELLENT**
Symmetry **EXCELLENT**
Fluorescence **NONE**
Inscription(s) **IGI LG791635414**
Comments: This Laboratory Grown Diamond was created by Chemical Vapor Deposition (CVD) growth process.
Type IIa



IGI



April 16, 2026
IGI Report No LG791635414
KITE STEP CUT
10.49 X 5.94 X 3.54 MM
1.00 CARAT
F
VS 1
59.6%
59%
Medium
Pointed
EXCELLENT
EXCELLENT
NONE
IGI LG791635414
Comments: This Laboratory Grown Diamond was created by Chemical Vapor Deposition (CVD) growth process.
Type IIa