



ELECTRONIC COPY

LG791634972
Report verification at igi.org



April 16, 2026

IGI Report Number **LG791634972**

Description **LABORATORY GROWN DIAMOND**

Shape and Cutting Style **EMERALD CUT**

Measurements **11.28 X 7.19 X 4.44 MM**

GRADING RESULTS

Carat Weight **3.70 CARATS**

Color Grade **FANCY VIVID PINK**

Clarity Grade **VS 1**

LABORATORY GROWN DIAMOND REPORT

April 16, 2026

IGI Report Number **LG791634972**

Description **LABORATORY GROWN DIAMOND**

Shape and Cutting Style **EMERALD CUT**

Measurements **11.28 X 7.19 X 4.44 MM**

GRADING RESULTS

Carat Weight **3.70 CARATS**

Color Grade **FANCY VIVID PINK**

Clarity Grade **VS 1**

ADDITIONAL GRADING INFORMATION

Polish **EXCELLENT**

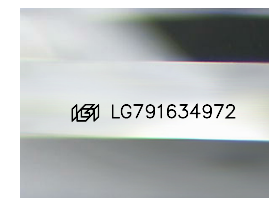
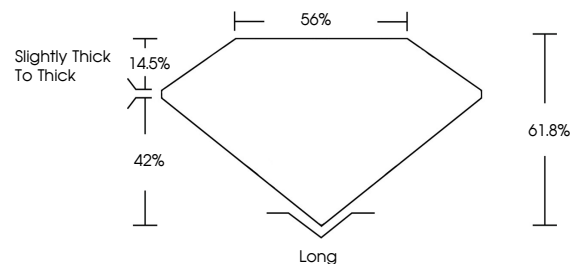
Symmetry **VERY GOOD**

Fluorescence **SLIGHT**

Inscription(s) **IGI LG791634972**

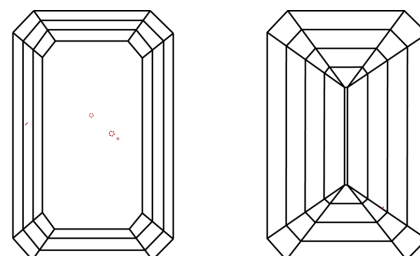
Comments: This Laboratory Grown Diamond was created by Chemical Vapor Deposition (CVD) growth process. Indications of post-growth treatment.

PROPORTIONS



Sample Image Used

CLARITY CHARACTERISTICS



KEY TO SYMBOLS

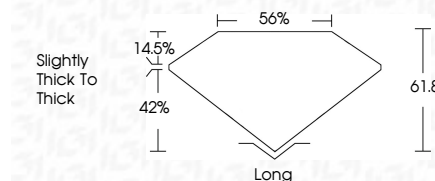
Red symbols indicate internal characteristics.
Green symbols indicate external characteristics.

COLOR

D E F G H I J Faint Very Light Light

CLARITY

FL	IF	VS ¹⁻²	VS ¹⁻²	SI ¹⁻²	I ¹⁻³
Flawless	Internally Flawless	Very Very Slightly Included	Very Slightly Included	Slightly Included	Included



ADDITIONAL GRADING INFORMATION

Polish **EXCELLENT**

Symmetry **VERY GOOD**

Fluorescence **SLIGHT**

Inscription(s) **IGI LG791634972**

Comments: This Laboratory Grown Diamond was created by Chemical Vapor Deposition (CVD) growth process. Indications of post-growth treatment.



IGI



April 16, 2026
IGI Report No LG791634972
EMERALD CUT

3.70 CARATS
Carat Weight
FANCY VIVID PINK
Color Grade

VS 1
Clarity Grade
61.8%
Table
85%
Girdle
Slightly thick to thick

Long
Culet
EXCELLENT
Polish
VERY GOOD
Symmetry
SLIGHT
Fluorescence
Inscription(s)
IGI LG791634972

Comments: This Laboratory Grown Diamond was created by Chemical Vapor Deposition (CVD) growth process. Indications of post-growth treatment.