



**INTERNATIONAL  
GEMOLOGICAL  
INSTITUTE**

**ELECTRONIC COPY**

**LABORATORY GROWN DIAMOND REPORT**

April 11, 2026  
IGI Report Number **LG791634824**  
Description **LABORATORY GROWN DIAMOND**  
Shape and Cutting Style **ROUND BRILLIANT**  
Measurements **5.20 - 5.22 X 3.17 MM**

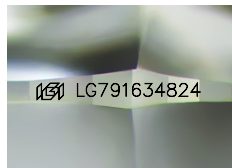
**GRADING RESULTS**

Carat Weight **0.52 CARAT**  
Color Grade **D**  
Clarity Grade **VS 1**  
Cut Grade **IDEAL**

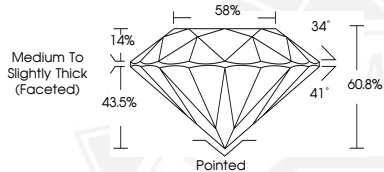
**ADDITIONAL GRADING INFORMATION**

Polish **EXCELLENT**  
Symmetry **EXCELLENT**  
Fluorescence **NONE**  
Inscription(s) **IGI LG791634824**

Comments: This Laboratory Grown Diamond was created by Chemical Vapor Deposition (CVD) growth process. Type IIa



Sample Image Used



April 11, 2026  
IGI Report Number **LG791634824**  
**ROUND BRILLIANT**  
**LABORATORY GROWN DIAMOND**  
**5.20 - 5.22 X 3.17 MM**  
Carat Weight **0.52 CARAT**  
Color Grade **D**  
Clarity Grade **VS 1**  
Cut Grade **IDEAL**  
Polish **EXCELLENT**  
Symmetry **EXCELLENT**  
Fluorescence **NONE**  
Inscription(s) **IGI LG791634824**  
Comments: This Laboratory Grown Diamond was created by Chemical Vapor Deposition (CVD) growth process. Type IIa



April 11, 2026  
IGI Report Number **LG791634824**  
**ROUND BRILLIANT**  
**LABORATORY GROWN DIAMOND**  
**5.20 - 5.22 X 3.17 MM**  
Carat Weight **0.52 CARAT**  
Color Grade **D**  
Clarity Grade **VS 1**  
Cut Grade **IDEAL**  
Polish **EXCELLENT**  
Symmetry **EXCELLENT**  
Fluorescence **NONE**  
Inscription(s) **IGI LG791634824**  
Comments: This Laboratory Grown Diamond was created by Chemical Vapor Deposition (CVD) growth process. Type IIa



THIS DOCUMENT WAS PRODUCED WITH THE FOLLOWING SECURITY MEASURES: SPECIAL DOCUMENT PAPER, INK SCREENS, WATERMARK, BACKGROUND DESIGNS, HOLOGRAM AND OTHER SECURITY FEATURES NOT LISTED AND DO EXCEED DOCUMENT SECURITY INDUSTRY GUIDELINES.

For terms & conditions and to verify this report, please visit [www.igi.org](http://www.igi.org)