



ELECTRONIC COPY

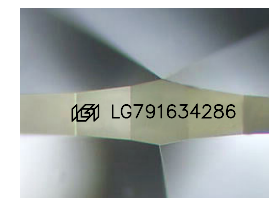
LG791634286
Report verification at igi.org



April 14, 2026
IGI Report Number **LG791634286**
Description **LABORATORY GROWN DIAMOND**
Shape and Cutting Style **OVAL POLYGON STEP CUT**
Measurements **10.12 X 7.29 X 4.77 MM**

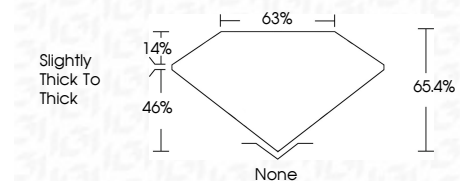
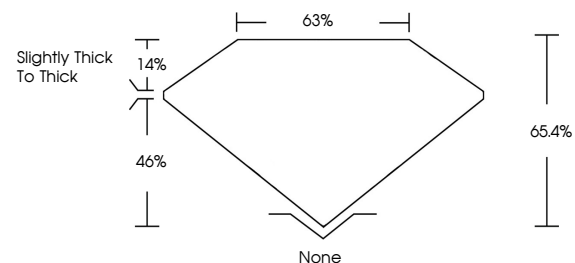
GRADING RESULTS

Carat Weight **2.59 CARATS**
Color Grade **E**
Clarity Grade **VVS 1**

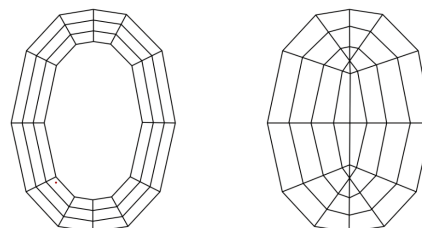


Sample Image Used

PROPORTIONS



CLARITY CHARACTERISTICS



KEY TO SYMBOLS

Red symbols indicate internal characteristics.
Green symbols indicate external characteristics.

COLOR

D E F G H I J Faint Very Light Light

CLARITY

FL	IF	VVS ¹⁻²	VS ¹⁻²	SI ¹⁻²	I ¹⁻³
Flawless	Internally Flawless	Very Very Slightly Included	Very Slightly Included	Slightly Included	Included

ADDITIONAL GRADING INFORMATION

Polish **EXCELLENT**
Symmetry **EXCELLENT**
Fluorescence **NONE**
Inscription(s) **IGI LG791634286**
Comments: This Laboratory Grown Diamond was created by Chemical Vapor Deposition (CVD) growth process.
Type IIa



IGI



April 14, 2026
IGI Report No LG791634286
OVAL POLYGON STEP CUT
10.12 X 7.29 X 4.77 MM
Carat Weight **2.59 CARATS**
Color Grade **E**
Clarity Grade **VVS 1**
Depth **65.4%**
Table **46%**
Girdle **Slightly Thick To Thick**
Culet **None**
Polish **EXCELLENT**
Symmetry **EXCELLENT**
Fluorescence **NONE**
Inscription(s) **IGI LG791634286**
Comments: This Laboratory Grown Diamond was created by Chemical Vapor Deposition (CVD) growth process.
Type IIa