



April 14, 2026

IGI Report Number **LG791632124**

**OVAL BRILLIANT**  
LABORATORY GROWN DIAMOND  
7.32 X 5.10 X 3.16 MM  
Carat Weight **0.75 CARAT**  
Color Grade **E**  
Clarity Grade **I.F.**  
Polish **EXCELLENT**  
Symmetry **EXCELLENT**  
Fluorescence **NONE**  
Inscription(s) **IGI LG791632124**

Comments: As Grown - No indication of post-growth treatment. This Laboratory Grown Diamond was created by High Pressure High Temperature (HPHT) growth process. Type II

**LABORATORY GROWN DIAMOND REPORT**

April 14, 2026  
IGI Report Number **LG791632124**  
Description **LABORATORY GROWN DIAMOND**  
Shape and Cutting Style **OVAL BRILLIANT**  
Measurements **7.32 X 5.10 X 3.16 MM**

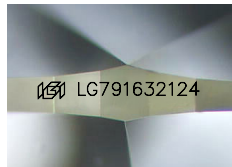
**GRADING RESULTS**

Carat Weight **0.75 CARAT**  
Color Grade **E**  
Clarity Grade **INTERNALLY FLAWLESS**

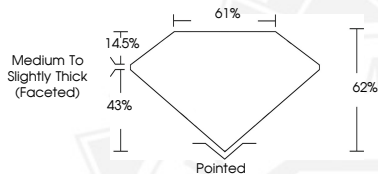
**ADDITIONAL GRADING INFORMATION**

Polish **EXCELLENT**  
Symmetry **EXCELLENT**  
Fluorescence **NONE**  
Inscription(s) **IGI LG791632124**

Comments: As Grown - No indication of post-growth treatment. This Laboratory Grown Diamond was created by High Pressure High Temperature (HPHT) growth process. Type II



Sample Image Used



April 14, 2026

IGI Report Number **LG791632124**

**OVAL BRILLIANT**  
LABORATORY GROWN DIAMOND  
7.32 X 5.10 X 3.16 MM  
Carat Weight **0.75 CARAT**  
Color Grade **E**  
Clarity Grade **I.F.**  
Polish **EXCELLENT**  
Symmetry **EXCELLENT**  
Fluorescence **NONE**  
Inscription(s) **IGI LG791632124**

Comments: As Grown - No indication of post-growth treatment. This Laboratory Grown Diamond was created by High Pressure High Temperature (HPHT) growth process. Type II



THIS DOCUMENT WAS PRODUCED WITH THE FOLLOWING SECURITY MEASURES: SPECIAL DOCUMENT PAPER, INK SCREENS, WATERMARK, BACKGROUND DESIGNS, HOLOGRAM AND OTHER SECURITY FEATURES NOT LISTED AND DO EXCEED DOCUMENT SECURITY INDUSTRY GUIDELINES.