



ELECTRONIC COPY

LG791632095
Report verification at igi.org



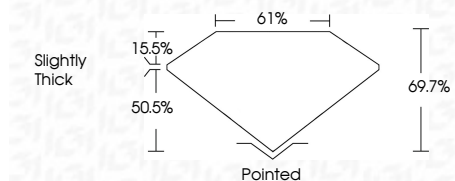
April 24, 2026
IGI Report Number **LG791632095**
Description **LABORATORY GROWN DIAMOND**

Shape and Cutting Style **CUT CORNERED
RECTANGULAR MODIFIED
BRILLIANT**

Measurements **12.41 X 8.29 X 5.78 MM**

GRADING RESULTS

Carat Weight **5.59 CARATS**
Color Grade **FANCY VIVID YELLOW**
Clarity Grade **VS 1**



ADDITIONAL GRADING INFORMATION

Polish **EXCELLENT**
Symmetry **EXCELLENT**
Fluorescence **NONE**
Inscription(s) **IGI LG791632095**
Comments: This Laboratory Grown Diamond was created by Chemical Vapor Deposition (CVD) growth process.
Secondary color: Grey



April 24, 2026
IGI Report No LG791632095
CUT CORNERED RECT. MODIFIED BRILLIANT
12.41 X 8.29 X 5.78 MM
5.59 CARATS
FANCY VIVID YELLOW
VS 1
69.7%
61%
Slightly Thick
Pointed
EXCELLENT
EXCELLENT
NONE
IGI LG791632095
Comments: This Laboratory Grown Diamond was created by Chemical Vapor Deposition (CVD) growth process.
Secondary color: Grey

LABORATORY GROWN DIAMOND REPORT

April 24, 2026
IGI Report Number **LG791632095**
Description **LABORATORY GROWN DIAMOND**
Shape and Cutting Style **CUT CORNERED RECTANGULAR
MODIFIED BRILLIANT**
Measurements **12.41 X 8.29 X 5.78 MM**

GRADING RESULTS

Carat Weight **5.59 CARATS**
Color Grade **FANCY VIVID YELLOW**
Clarity Grade **VS 1**

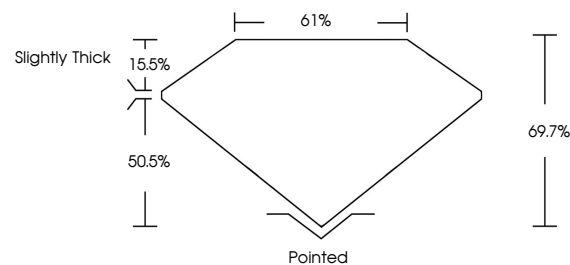
ADDITIONAL GRADING INFORMATION

Polish **EXCELLENT**
Symmetry **EXCELLENT**
Fluorescence **NONE**
Inscription(s) **IGI LG791632095**

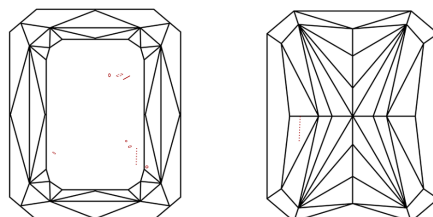
Comments: This Laboratory Grown Diamond was created by Chemical Vapor Deposition (CVD) growth process.

Secondary color: Grey

PROPORTIONS

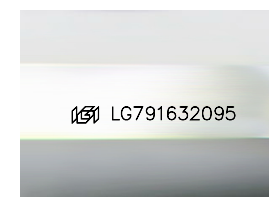


CLARITY CHARACTERISTICS



KEY TO SYMBOLS

Red symbols indicate internal characteristics.
Green symbols indicate external characteristics.



Sample Image Used

COLOR

D E F G H I J Faint Very Light Light

CLARITY

FL	IF	VS ¹⁻²	VS ¹⁻²	SI ¹⁻²	I ¹⁻³
Flawless	Internally Flawless	Very Very Slightly Included	Very Slightly Included	Slightly Included	Included

