



ELECTRONIC COPY

LG791631931
Report verification at igi.org

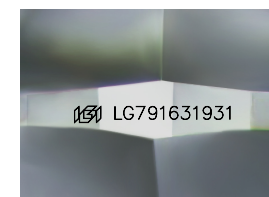
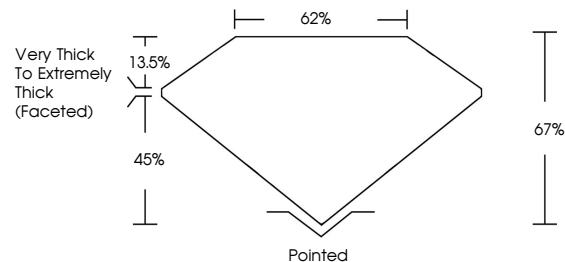


April 16, 2026
IGI Report Number **LG791631931**
Description **LABORATORY GROWN DIAMOND**
Shape and Cutting Style **CUSHION MODIFIED BRILLIANT**
Measurements **8.94 X 6.49 X 4.35 MM**
GRADING RESULTS
Carat Weight **2.30 CARATS**
Color Grade **FANCY INTENSE YELLOW**
Clarity Grade **VVS 2**

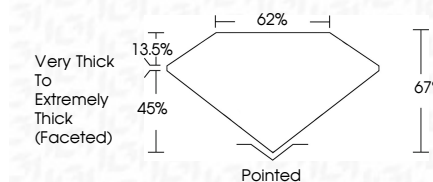
LABORATORY GROWN DIAMOND REPORT

April 16, 2026
IGI Report Number **LG791631931**
Description **LABORATORY GROWN DIAMOND**
Shape and Cutting Style **CUSHION MODIFIED BRILLIANT**
Measurements **8.94 X 6.49 X 4.35 MM**
GRADING RESULTS
Carat Weight **2.30 CARATS**
Color Grade **FANCY INTENSE YELLOW**
Clarity Grade **VVS 2**

PROPORTIONS



Sample Image Used



ADDITIONAL GRADING INFORMATION

Polish **EXCELLENT**
Symmetry **EXCELLENT**
Fluorescence **NONE**
Inscription(s) **IGI LG791631931**

Comments: This Laboratory Grown Diamond was created by Chemical Vapor Deposition (CVD) growth process.

COLOR

D E F G H I J Faint Very Light Light

CLARITY

FL	IF	VVS ¹⁻²	VS ¹⁻²	SI ¹⁻²	I ¹⁻³
Flawless	Internally Flawless	Very Very Slightly Included	Very Slightly Included	Slightly Included	Included

ADDITIONAL GRADING INFORMATION

Polish **EXCELLENT**
Symmetry **EXCELLENT**
Fluorescence **NONE**
Inscription(s) **IGI LG791631931**
Comments: This Laboratory Grown Diamond was created by Chemical Vapor Deposition (CVD) growth process.



IGI



April 16, 2026
IGI Report No LG791631931
CUSHION MODIFIED BRILLIANT
8.94 X 6.49 X 4.35 MM
2.30 CARATS
FANCY INTENSE YELLOW
VVS 2
67%
62%
Very Thick to Extremely Thick (Faceted)
Pointed
EXCELLENT
EXCELLENT
NONE
IGI LG791631931
Comments: This Laboratory Grown Diamond was created by Chemical Vapor Deposition (CVD) growth process.