



ELECTRONIC COPY

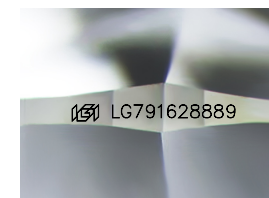
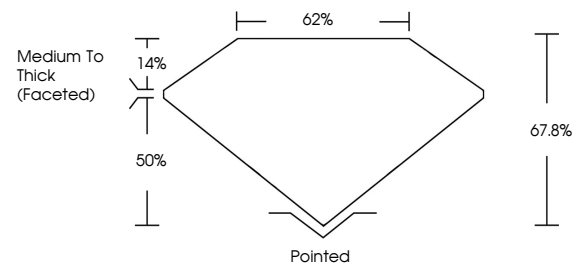
LG791628889
Report verification at igi.org



April 15, 2026
IGI Report Number **LG791628889**
Description **LABORATORY GROWN DIAMOND**
Shape and Cutting Style **CUSHION MODIFIED BRILLIANT**
Measurements **9.10 X 6.77 X 4.59 MM**
GRADING RESULTS
Carat Weight **2.24 CARATS**
Color Grade **D**
Clarity Grade **VS 1**

April 15, 2026
IGI Report Number **LG791628889**
Description **LABORATORY GROWN DIAMOND**
Shape and Cutting Style **CUSHION MODIFIED BRILLIANT**
Measurements **9.10 X 6.77 X 4.59 MM**

PROPORTIONS

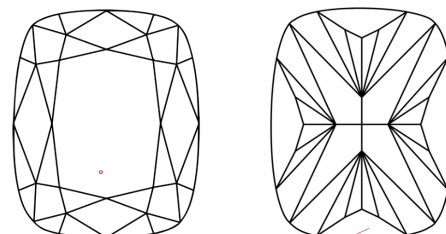


Sample Image Used

GRADING RESULTS

Carat Weight **2.24 CARATS**
Color Grade **D**
Clarity Grade **VS 1**

CLARITY CHARACTERISTICS



KEY TO SYMBOLS

Red symbols indicate internal characteristics.
Green symbols indicate external characteristics.

ADDITIONAL GRADING INFORMATION

Polish **EXCELLENT**
Symmetry **EXCELLENT**
Fluorescence **NONE**
Inscription(s) **IGI LG791628889**

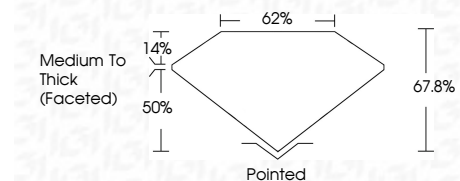
Comments: This Laboratory Grown Diamond was created by Chemical Vapor Deposition (CVD) growth process. Type IIa

COLOR

D E F G H I J Faint Very Light Light

CLARITY

FL	IF	VS ¹⁻²	VS ¹⁻²	SI ¹⁻²	I ¹⁻³
Flawless	Internally Flawless	Very Very Slightly Included	Very Slightly Included	Slightly Included	Included



ADDITIONAL GRADING INFORMATION

Polish **EXCELLENT**
Symmetry **EXCELLENT**
Fluorescence **NONE**
Inscription(s) **IGI LG791628889**
Comments: This Laboratory Grown Diamond was created by Chemical Vapor Deposition (CVD) growth process. Type IIa



April 15, 2026
IGI Report No LG791628889
CUSHION MODIFIED BRILLIANT
9.10 X 6.77 X 4.59 MM
2.24 CARATS
D
VS 1
67.0%
62%
Medium To Thick (Faceted)
Pointed
EXCELLENT
EXCELLENT
NONE
IGI LG791628889
Comments: This Laboratory Grown Diamond was created by Chemical Vapor Deposition (CVD) growth process. Type IIa