



ELECTRONIC COPY

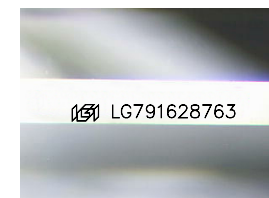
LG791628763
Report verification at igi.org



April 10, 2026
IGI Report Number **LG791628763**
Description **LABORATORY GROWN DIAMOND**
Shape and Cutting Style **EMERALD CUT**
Measurements **8.13 X 5.49 X 3.62 MM**

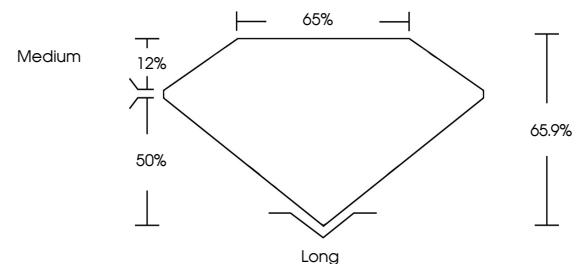
GRADING RESULTS

Carat Weight **1.57 CARAT**
Color Grade **D**
Clarity Grade **VVS 2**

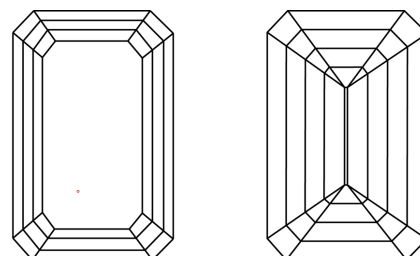


Sample Image Used

PROPORTIONS



CLARITY CHARACTERISTICS



KEY TO SYMBOLS

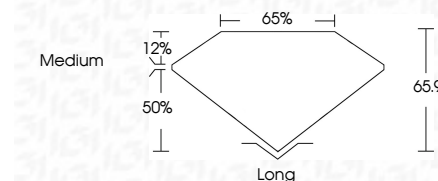
Red symbols indicate internal characteristics.
Green symbols indicate external characteristics.

COLOR

D E F G H I J Faint Very Light Light

CLARITY

FL	IF	VVS ¹⁻²	VS ¹⁻²	SI ¹⁻²	I ¹⁻³
Flawless	Internally Flawless	Very Very Slightly Included	Very Slightly Included	Slightly Included	Included



ADDITIONAL GRADING INFORMATION

Polish **EXCELLENT**
Symmetry **EXCELLENT**
Fluorescence **NONE**
Inscription(s) **(IGI) LG791628763**
Comments: This Laboratory Grown Diamond was created by Chemical Vapor Deposition (CVD) growth process. Type IIa



IGI



April 10, 2026
IGI Report No LG791628763
EMERALD CUT
8.13 X 5.49 X 3.62 MM
Carat Weight **1.57 CARAT**
Color Grade **D**
Clarity Grade **VVS 2**
Depth **50%**
Table **12%**
Girdle **Medium**
Culet **Long**
Polish **EXCELLENT**
Symmetry **EXCELLENT**
Fluorescence **NONE**
Inscription(s) **(IGI) LG791628763**
Comments: This Laboratory Grown Diamond was created by Chemical Vapor Deposition (CVD) growth process. Type IIa

Certified
**SUSTAINABILITY RATED
DIAMOND**
SCS GLOBAL SERVICES

All certified diamonds come with an individual certificate, **ONLY** available at an accredited retailer

FOR THE SUSTAINABILITY RATED CERTIFICATE, SCAN HERE →