



ELECTRONIC COPY

LG791627693
Report verification at igi.org



April 14, 2026
IGI Report Number **LG791627693**
Description **LABORATORY GROWN DIAMOND**

Shape and Cutting Style **PRINCESS CUT**
Measurements **10.17 X 9.92 X 6.96 MM**

GRADING RESULTS
Carat Weight **6.24 CARATS**
Color Grade **F**
Clarity Grade **VS 1**

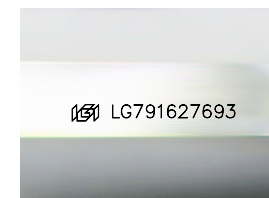
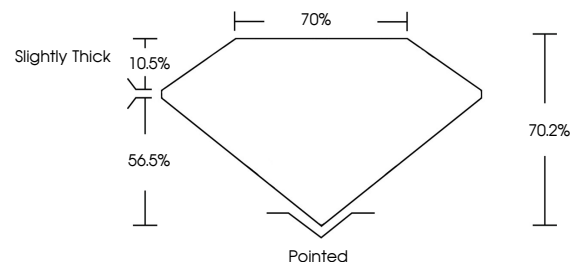
April 14, 2026
IGI Report Number **LG791627693**
Description **LABORATORY GROWN DIAMOND**
Shape and Cutting Style **PRINCESS CUT**
Measurements **10.17 X 9.92 X 6.96 MM**

GRADING RESULTS
Carat Weight **6.24 CARATS**
Color Grade **F**
Clarity Grade **VS 1**

ADDITIONAL GRADING INFORMATION
Polish **EXCELLENT**
Symmetry **EXCELLENT**
Fluorescence **NONE**
Inscription(s) **IGI LG791627693**

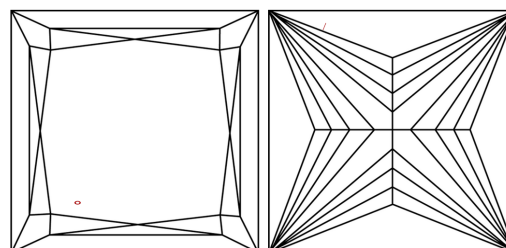
Comments: This Laboratory Grown Diamond was created by Chemical Vapor Deposition (CVD) growth process. Type IIa

PROPORTIONS



Sample Image Used

CLARITY CHARACTERISTICS



KEY TO SYMBOLS

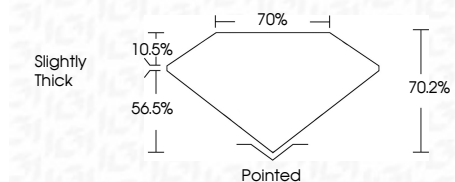
Red symbols indicate internal characteristics.
Green symbols indicate external characteristics.

COLOR

D E F G H I J Faint Very Light Light

CLARITY

FL	IF	VS ¹⁻²	VS ¹⁻²	SI ¹⁻²	I ¹⁻³
Flawless	Internally Flawless	Very Very Slightly Included	Very Slightly Included	Slightly Included	Included



ADDITIONAL GRADING INFORMATION

Polish **EXCELLENT**
Symmetry **EXCELLENT**
Fluorescence **NONE**
Inscription(s) **IGI LG791627693**
Comments: This Laboratory Grown Diamond was created by Chemical Vapor Deposition (CVD) growth process. Type IIa



IGI



April 14, 2026
IGI Report No LG791627693
PRINCESS CUT
10.17 X 9.92 X 6.96 MM
6.24 CARATS
F
VS 1
70.2%
70%
Slightly Thick
Pointed
EXCELLENT
EXCELLENT
NONE
IGI LG791627693
Comments: This Laboratory Grown Diamond was created by Chemical Vapor Deposition (CVD) growth process. Type IIa