



ELECTRONIC COPY

LG791626994
Report verification at igi.org



April 22, 2026

IGI Report Number **LG791626994**

Description **LABORATORY GROWN DIAMOND**

Shape and Cutting Style **CUT CORNERED
RECTANGULAR MODIFIED
BRILLIANT**

Measurements **8.18 X 5.42 X 3.58 MM**

GRADING RESULTS

Carat Weight **1.48 CARAT**

Color Grade **FANCY INTENSE YELLOW**

Clarity Grade **VS 1**

LABORATORY GROWN DIAMOND REPORT

April 22, 2026

IGI Report Number **LG791626994**

Description **LABORATORY GROWN DIAMOND**

Shape and Cutting Style **CUT CORNERED RECTANGULAR
MODIFIED BRILLIANT**

Measurements **8.18 X 5.42 X 3.58 MM**

GRADING RESULTS

Carat Weight **1.48 CARAT**

Color Grade **FANCY INTENSE YELLOW**

Clarity Grade **VS 1**

ADDITIONAL GRADING INFORMATION

Polish **EXCELLENT**

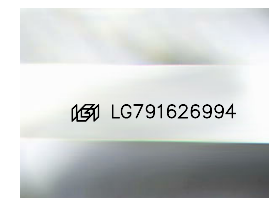
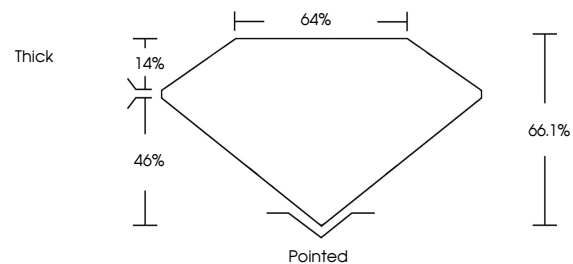
Symmetry **EXCELLENT**

Fluorescence **NONE**

Inscription(s) **IGI LG791626994**

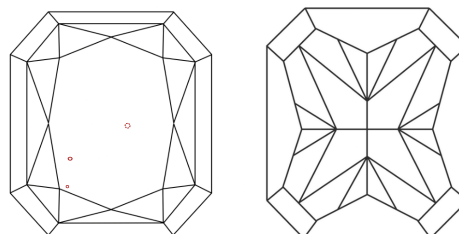
Comments: This Laboratory Grown Diamond was created by Chemical Vapor Deposition (CVD) growth process.

PROPORTIONS



Sample Image Used

CLARITY CHARACTERISTICS



KEY TO SYMBOLS

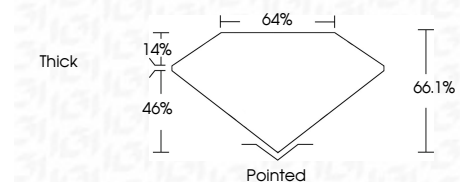
Red symbols indicate internal characteristics.
Green symbols indicate external characteristics.

COLOR

D E F G H I J Faint Very Light Light

CLARITY

FL	IF	VS ¹⁻²	VS ¹⁻²	SI ¹⁻²	I ¹⁻³
Flawless	Internally Flawless	Very Very Slightly Included	Very Slightly Included	Slightly Included	Included



ADDITIONAL GRADING INFORMATION

Polish **EXCELLENT**

Symmetry **EXCELLENT**

Fluorescence **NONE**

Inscription(s) **IGI LG791626994**

Comments: This Laboratory Grown Diamond was created by Chemical Vapor Deposition (CVD) growth process.



IGI



April 22, 2026
IGI Report No LG791626994
CUT CORNERED RECT. MODIFIED BRILLIANT
8.18 X 5.42 X 3.58 MM
1.48 CARAT
Color Grade FANCY INTENSE YELLOW
Clarity Grade VS 1
Depth 66.1%
Table 64%
Girdle Thick
Culet Pointed
Polish EXCELLENT
Symmetry EXCELLENT
Fluorescence NONE
Inscription(s) IGI LG791626994

Comments: This Laboratory Grown Diamond was created by Chemical Vapor Deposition (CVD) growth process.