



**ELECTRONIC COPY**

LG791626468  
Report verification at igi.org



April 23, 2026  
IGI Report Number **LG791626468**  
Description **LABORATORY GROWN DIAMOND**  
Shape and Cutting Style **CUSHION MODIFIED BRILLIANT**  
Measurements **7.15 X 6.60 X 4.81 MM**  
**GRADING RESULTS**  
Carat Weight **2.00 CARATS**  
Color Grade **FANCY VIVID BLUE**  
Clarity Grade **VS 2**

**LABORATORY GROWN DIAMOND REPORT**

April 23, 2026  
IGI Report Number **LG791626468**  
Description **LABORATORY GROWN DIAMOND**  
Shape and Cutting Style **CUSHION MODIFIED BRILLIANT**  
Measurements **7.15 X 6.60 X 4.81 MM**

**GRADING RESULTS**

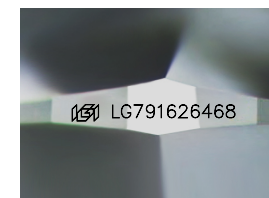
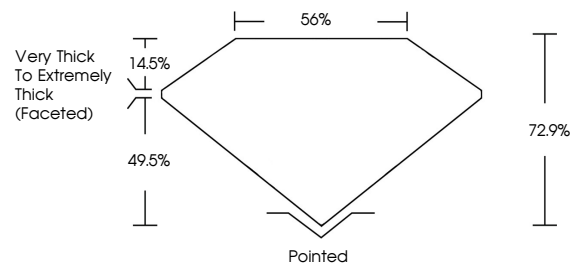
Carat Weight **2.00 CARATS**  
Color Grade **FANCY VIVID BLUE**  
Clarity Grade **VS 2**

**ADDITIONAL GRADING INFORMATION**

Polish **EXCELLENT**  
Symmetry **GOOD**  
Fluorescence **NONE**  
Inscription(s) **IGI LG791626468**

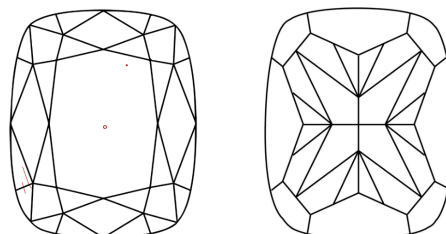
Comments: This Laboratory Grown Diamond was created by Chemical Vapor Deposition (CVD) growth process.  
Indications of post-growth treatment.

**PROPORTIONS**



Sample Image Used

**CLARITY CHARACTERISTICS**



**KEY TO SYMBOLS**

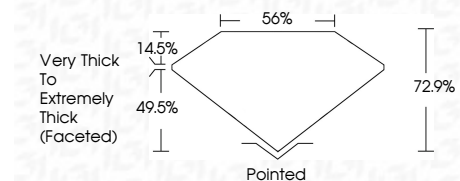
Red symbols indicate internal characteristics.  
Green symbols indicate external characteristics.

**COLOR**

D E F G H I J Faint Very Light Light

**CLARITY**

FL	IF	VS <sup>1-2</sup>	VS <sup>1-2</sup>	SI <sup>1-2</sup>	I <sup>1-3</sup>
Flawless	Internally Flawless	Very Very Slightly Included	Very Slightly Included	Slightly Included	Included



**ADDITIONAL GRADING INFORMATION**

Polish **EXCELLENT**  
Symmetry **GOOD**  
Fluorescence **NONE**  
Inscription(s) **IGI LG791626468**  
Comments: This Laboratory Grown Diamond was created by Chemical Vapor Deposition (CVD) growth process.  
Indications of post-growth treatment.



April 23, 2026  
IGI Report No LG791626468  
**CUSHION MODIFIED BRILLIANT**  
7.15 X 6.60 X 4.81 MM  
2.00 CARATS  
FANCY VIVID BLUE  
VS 2  
72.9%  
56%  
Very Thick to Extremely Thick (Faceted)  
Pointed  
EXCELLENT  
GOOD  
NONE  
IGI LG791626468  
Comments: This Laboratory Grown Diamond was created by Chemical Vapor Deposition (CVD) growth process.  
Indications of post-growth treatment.