



**ELECTRONIC COPY**

LG791626451  
Report verification at igi.org



April 30, 2026

IGI Report Number **LG791626451**

Description **LABORATORY GROWN DIAMOND**

Shape and Cutting Style **SQUARE CUSHION BRILLIANT**

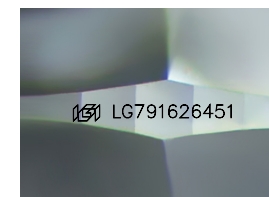
Measurements **6.74 X 6.63 X 4.08 MM**

**GRADING RESULTS**

Carat Weight **1.26 CARAT**

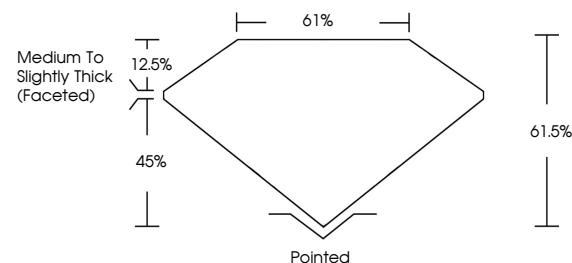
Color Grade **FANCY LIGHT YELLOW**

Clarity Grade **VVS 2**

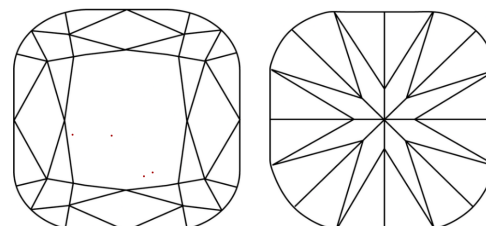


Sample Image Used

**PROPORTIONS**



**CLARITY CHARACTERISTICS**



**KEY TO SYMBOLS**

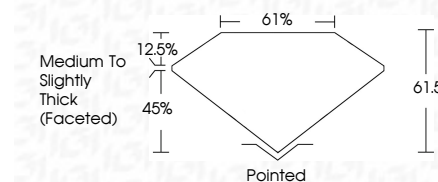
Red symbols indicate internal characteristics.  
Green symbols indicate external characteristics.

**COLOR**

D E F G H I J Faint Very Light Light

**CLARITY**

| FL       | IF                  | VVS <sup>1-2</sup>          | VS <sup>1-2</sup>      | SI <sup>1-2</sup> | I <sup>1-3</sup> |
|----------|---------------------|-----------------------------|------------------------|-------------------|------------------|
| Flawless | Internally Flawless | Very Very Slightly Included | Very Slightly Included | Slightly Included | Included         |



**ADDITIONAL GRADING INFORMATION**

Polish **EXCELLENT**

Symmetry **EXCELLENT**

Fluorescence **NONE**

Inscription(s) **IGI LG791626451**

Comments: This Laboratory Grown Diamond was created by Chemical Vapor Deposition (CVD) growth process.



**IGI**



April 30, 2026  
IGI Report No LG791626451  
**SQUARE CUSHION BRILLIANT**  
1.26 CARAT  
FANCY LIGHT YELLOW  
VVS 2  
6.74 X 6.63 X 4.08 MM  
Medium to Slightly Thick (Faceted)  
Pointed  
EXCELLENT  
EXCELLENT  
NONE  
IGI LG791626451  
Comments: This Laboratory Grown Diamond was created by Chemical Vapor Deposition (CVD) growth process.