



**ELECTRONIC COPY**

LG791626446  
Report verification at igi.org



April 23, 2026

IGI Report Number **LG791626446**

Description **LABORATORY GROWN DIAMOND**

Shape and Cutting Style **CUT CORNERED  
RECTANGULAR MODIFIED  
BRILLIANT**

Measurements **8.76 X 6.00 X 4.28 MM**

**GRADING RESULTS**

Carat Weight **2.08 CARATS**

Color Grade **FANCY VIVID PINK**

Clarity Grade **VS 1**

April 23, 2026

IGI Report Number **LG791626446**

Description **LABORATORY GROWN DIAMOND**

Shape and Cutting Style **CUT CORNERED RECTANGULAR  
MODIFIED BRILLIANT**

Measurements **8.76 X 6.00 X 4.28 MM**

**GRADING RESULTS**

Carat Weight **2.08 CARATS**

Color Grade **FANCY VIVID PINK**

Clarity Grade **VS 1**

**ADDITIONAL GRADING INFORMATION**

Polish **EXCELLENT**

Symmetry **EXCELLENT**

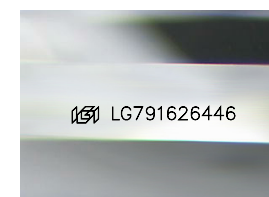
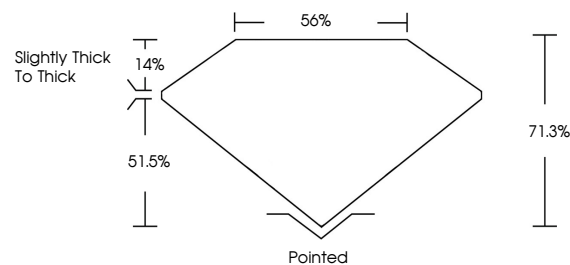
Fluorescence **SLIGHT**

Inscription(s) **IGI LG791626446**

Comments: This Laboratory Grown Diamond was created by Chemical Vapor Deposition (CVD) growth process.

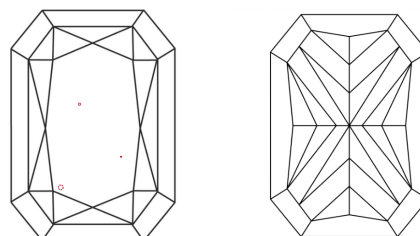
Indications of post-growth treatment.

**PROPORTIONS**



Sample Image Used

**CLARITY CHARACTERISTICS**



**KEY TO SYMBOLS**

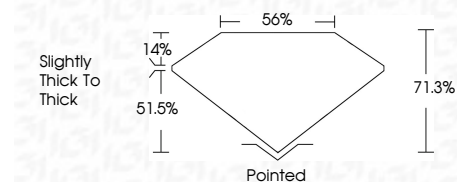
Red symbols indicate internal characteristics.  
Green symbols indicate external characteristics.

**COLOR**

D E F G H I J Faint Very Light Light

**CLARITY**

FL	IF	VS <sup>1-2</sup>	VS <sup>1-2</sup>	SI <sup>1-2</sup>	I <sup>1-3</sup>
Flawless	Internally Flawless	Very Very Slightly Included	Very Slightly Included	Slightly Included	Included



**ADDITIONAL GRADING INFORMATION**

Polish **EXCELLENT**

Symmetry **EXCELLENT**

Fluorescence **SLIGHT**

Inscription(s) **IGI LG791626446**

Comments: This Laboratory Grown Diamond was created by Chemical Vapor Deposition (CVD) growth process. Indications of post-growth treatment.



**IGI**



April 23, 2026  
IGI Report No LG791626446  
CUT CORNERED RECT. MODIFIED BRILLIANT

8.76 X 6.00 X 4.28 MM  
2.08 CARATS  
FANCY VIVID PINK  
VS 1  
71.3%  
56%  
Slightly thick to thick

Pointed  
EXCELLENT  
EXCELLENT  
SLIGHT  
IGI LG791626446

Comments: This Laboratory Grown Diamond was created by Chemical Vapor Deposition (CVD) growth process. Indications of post-growth treatment.