



ELECTRONIC COPY

LG791626432
Report verification at igi.org



April 22, 2026

IGI Report Number **LG791626432**

Description **LABORATORY GROWN DIAMOND**

Shape and Cutting Style **ROUND MIXED CUT**

Measurements **10.58 - 10.59 X 6.49 MM**

GRADING RESULTS

Carat Weight **5.09 CARATS**

Color Grade **E**

Clarity Grade **VVS 2**

April 22, 2026

IGI Report Number **LG791626432**

Description **LABORATORY GROWN DIAMOND**

Shape and Cutting Style **ROUND MIXED CUT**

Measurements **10.58 - 10.59 X 6.49 MM**

GRADING RESULTS

Carat Weight **5.09 CARATS**

Color Grade **E**

Clarity Grade **VVS 2**

ADDITIONAL GRADING INFORMATION

Polish **EXCELLENT**

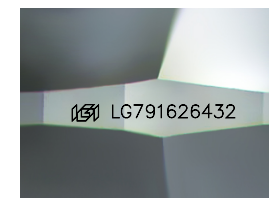
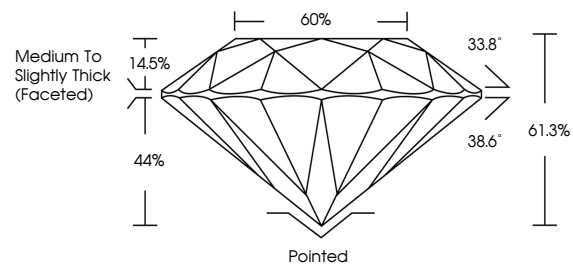
Symmetry **EXCELLENT**

Fluorescence **NONE**

Inscription(s) **IGI LG791626432**

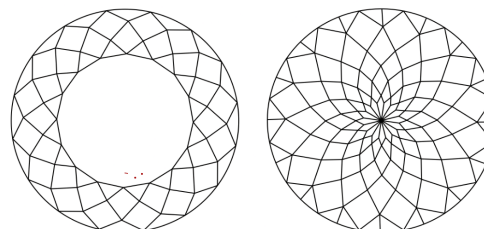
Comments: This Laboratory Grown Diamond was created by Chemical Vapor Deposition (CVD) growth process. Type IIa

PROPORTIONS



Sample Image Used

CLARITY CHARACTERISTICS



KEY TO SYMBOLS

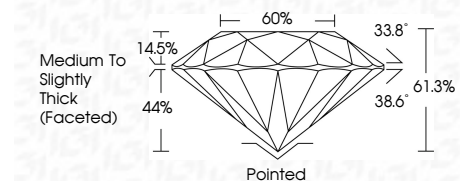
Red symbols indicate internal characteristics.
Green symbols indicate external characteristics.

COLOR

D E F G H I J Faint Very Light Light

CLARITY

FL	IF	VVS ¹⁻²	VS ¹⁻²	SI ¹⁻²	I ¹⁻³
Flawless	Internally Flawless	Very Very Slightly Included	Very Slightly Included	Slightly Included	Included



ADDITIONAL GRADING INFORMATION

Polish **EXCELLENT**

Symmetry **EXCELLENT**

Fluorescence **NONE**

Inscription(s) **IGI LG791626432**

Comments: This Laboratory Grown Diamond was created by Chemical Vapor Deposition (CVD) growth process. Type IIa



IGI



April 22, 2026
IGI Report No LG791626432
ROUND MIXED CUT

5.09 CARATS
E

10.58 - 10.59 X 6.49 MM

Carat Weight
Color Grade
Clarity Grade
Table
Girdle
Culet
Polish
Symmetry
Fluorescence
Inscription(s)

5.09 CARATS
E
VVS 2
61.0%
60%
Medium to Slightly Thick (Faceted)
Pointed
EXCELLENT
EXCELLENT
NONE
IGI LG791626432

Comments: This Laboratory Grown Diamond was created by Chemical Vapor Deposition (CVD) growth process. Type IIa