



ELECTRONIC COPY

LG791620314 Report verification at igi.org



April 15, 2026 IGI Report Number LG791620314 Description LABORATORY GROWN DIAMOND Shape and Cutting Style ROUND BRILLIANT Measurements 12.44 - 12.50 X 7.43 MM GRADING RESULTS Carat Weight 7.05 CARATS Color Grade D Clarity Grade VS 1 Cut Grade EXCELLENT

April 15, 2026 IGI Report Number LG791620314 Description LABORATORY GROWN DIAMOND Shape and Cutting Style ROUND BRILLIANT Measurements 12.44 - 12.50 X 7.43 MM

GRADING RESULTS

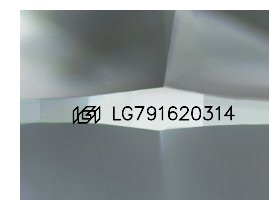
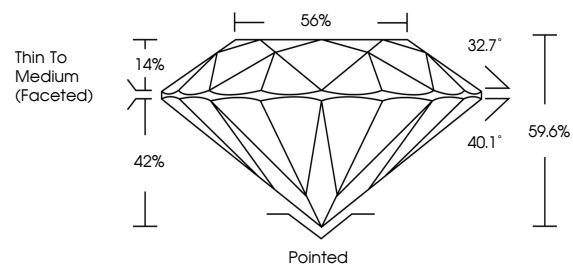
Carat Weight 7.05 CARATS Color Grade D Clarity Grade VS 1 Cut Grade EXCELLENT

ADDITIONAL GRADING INFORMATION

Polish EXCELLENT Symmetry EXCELLENT Fluorescence NONE Inscription(s) LG791620314

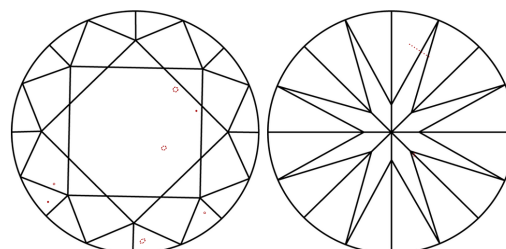
Comments: This Laboratory Grown Diamond was created by Chemical Vapor Deposition (CVD) growth process. Type IIa

PROPORTIONS



Sample Image Used

CLARITY CHARACTERISTICS



KEY TO SYMBOLS

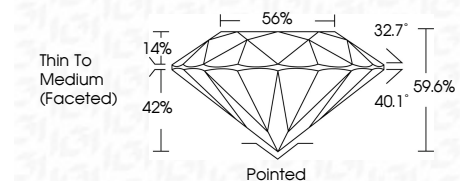
Red symbols indicate internal characteristics. Green symbols indicate external characteristics.

COLOR

D E F G H I J Faint Very Light Light

CLARITY

FL IF VS 1-2 VS 2-3 SI 1-2 I 1-3 Flawless Internally Flawless Very Very Slightly Included Very Slightly Included Slightly Included Included



ADDITIONAL GRADING INFORMATION

Polish EXCELLENT Symmetry EXCELLENT Fluorescence NONE Inscription(s) LG791620314 Comments: This Laboratory Grown Diamond was created by Chemical Vapor Deposition (CVD) growth process. Type IIa



April 15, 2026 IGI Report No LG791620314 ROUND BRILLIANT 12.44 - 12.50 X 7.43 MM 7.05 CARATS D VS 1 EXCELLENT EXCELLENT 59.6% 56% Thin To Medium (Faceted) Pointed EXCELLENT EXCELLENT NONE NONE LG791620314 Comments: This Laboratory Grown Diamond was created by Chemical Vapor Deposition (CVD) growth process. Type IIa