



ELECTRONIC COPY

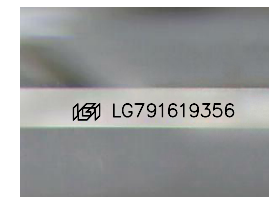
LG791619356
Report verification at igi.org



April 15, 2026
IGI Report Number **LG791619356**
Description **LABORATORY GROWN DIAMOND**

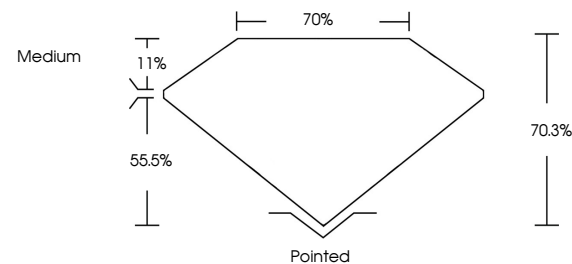
Shape and Cutting Style **PRINCESS CUT**
Measurements **10.08 X 9.91 X 6.97 MM**

GRADING RESULTS
Carat Weight **6.13 CARATS**
Color Grade **E**
Clarity Grade **VVS 2**

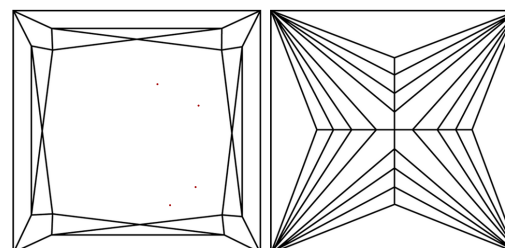


Sample Image Used

PROPORTIONS



CLARITY CHARACTERISTICS



KEY TO SYMBOLS

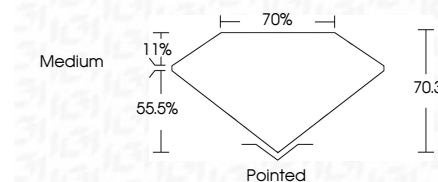
Red symbols indicate internal characteristics.
Green symbols indicate external characteristics.

COLOR

D E F G H I J Faint Very Light Light

CLARITY

FL	IF	VVS ¹⁻²	VS ¹⁻²	SI ¹⁻²	I ¹⁻³
Flawless	Internally Flawless	Very Very Slightly Included	Very Slightly Included	Slightly Included	Included



ADDITIONAL GRADING INFORMATION

Polish **EXCELLENT**
Symmetry **EXCELLENT**
Fluorescence **NONE**
Inscription(s) **IGI LG791619356**
Comments: This Laboratory Grown Diamond was created by Chemical Vapor Deposition (CVD) growth process. Type IIa



IGI



April 15, 2026
IGI Report No LG791619356
PRINCESS CUT
10.08 X 9.91 X 6.97 MM
6.13 CARATS
E
VVS 2
70.3%
70%
Medium
Pointed
EXCELLENT
EXCELLENT
NONE
IGI LG791619356
Comments: This Laboratory Grown Diamond was created by Chemical Vapor Deposition (CVD) growth process. Type IIa