



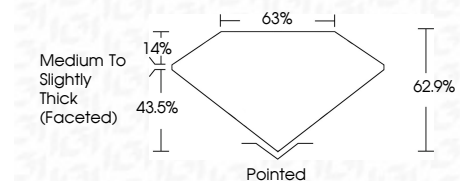
ELECTRONIC COPY

LG791619089 Report verification at igi.org



April 15, 2026 IGI Report Number LG791619089 Description LABORATORY GROWN DIAMOND Shape and Cutting Style MARQUISE BRILLIANT Measurements 11.46 X 6.03 X 3.79 MM

GRADING RESULTS Carat Weight 1.50 CARAT Color Grade E Clarity Grade VVS 2



ADDITIONAL GRADING INFORMATION Polish EXCELLENT Symmetry EXCELLENT Fluorescence NONE Inscription(s) IGI LG791619089 Comments: This Laboratory Grown Diamond was created by Chemical Vapor Deposition (CVD) growth process. Type IIa



April 15, 2026 IGI Report No LG791619089 MARQUISE BRILLIANT 1.50 CARAT E VVS 2 62.9% 63% Medium to Slightly Thick (Faceted) Pointed EXCELLENT EXCELLENT NONE IGI LG791619089 Comments: This Laboratory Grown Diamond was created by Chemical Vapor Deposition (CVD) growth process. Type IIa

LABORATORY GROWN DIAMOND REPORT

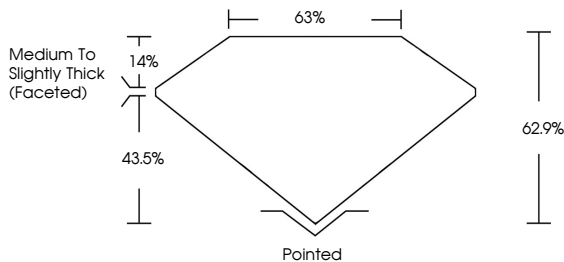
April 15, 2026 IGI Report Number LG791619089 Description LABORATORY GROWN DIAMOND Shape and Cutting Style MARQUISE BRILLIANT Measurements 11.46 X 6.03 X 3.79 MM

GRADING RESULTS Carat Weight 1.50 CARAT Color Grade E Clarity Grade VVS 2

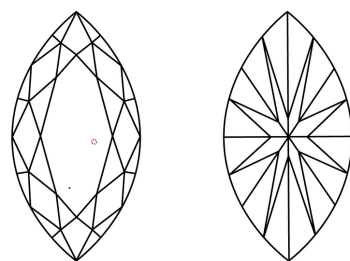
ADDITIONAL GRADING INFORMATION Polish EXCELLENT Symmetry EXCELLENT Fluorescence NONE Inscription(s) IGI LG791619089

Comments: This Laboratory Grown Diamond was created by Chemical Vapor Deposition (CVD) growth process. Type IIa

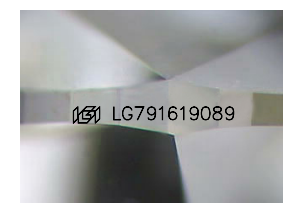
PROPORTIONS



CLARITY CHARACTERISTICS



KEY TO SYMBOLS Red symbols indicate internal characteristics. Green symbols indicate external characteristics.



Sample Image Used

COLOR table with columns D, E, F, G, H, I, J, Faint, Very Light, Light

CLARITY table with columns FL, IF, VVS 1-2, VS 1-2, SI 1-2, I 1-3, Flawless, Internally Flawless, Very Very Slightly Included, Very Slightly Included, Slightly Included, Included

