



ELECTRONIC COPY

LG791618525
Report verification at igi.org



April 17, 2026

IGI Report Number **LG791618525**

Description **LABORATORY GROWN DIAMOND**

Shape and Cutting Style **EMERALD CUT**

Measurements **8.62 X 6.03 X 3.98 MM**

GRADING RESULTS

Carat Weight **2.09 CARATS**

Color Grade **FANCY VIVID GREEN**

Clarity Grade **VS 1**

April 17, 2026
IGI Report Number **LG791618525**
Description **LABORATORY GROWN DIAMOND**
Shape and Cutting Style **EMERALD CUT**
Measurements **8.62 X 6.03 X 3.98 MM**

GRADING RESULTS

Carat Weight **2.09 CARATS**

Color Grade **FANCY VIVID GREEN**

Clarity Grade **VS 1**

ADDITIONAL GRADING INFORMATION

Polish **EXCELLENT**

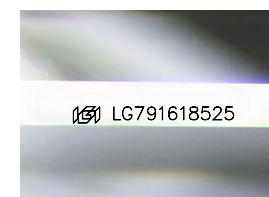
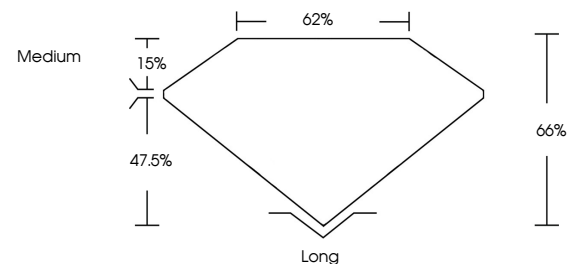
Symmetry **EXCELLENT**

Fluorescence **NONE**

Inscription(s) **IGI LG791618525**

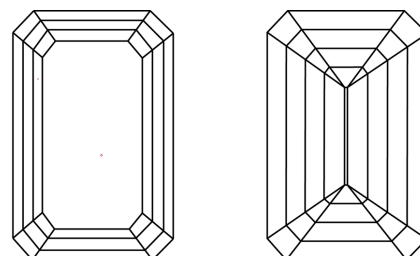
Comments: This Laboratory Grown Diamond was created by Chemical Vapor Deposition (CVD) growth process.
Indications of post-growth treatment.

PROPORTIONS



Sample Image Used

CLARITY CHARACTERISTICS



KEY TO SYMBOLS

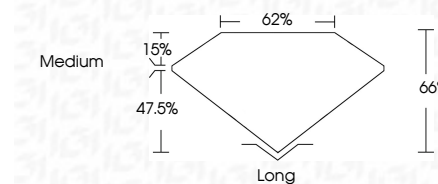
Red symbols indicate internal characteristics.
Green symbols indicate external characteristics.

COLOR

D E F G H I J Faint Very Light Light

CLARITY

FL	IF	VS ¹⁻²	VS ¹⁻²	SI ¹⁻²	I ¹⁻³
Flawless	Internally Flawless	Very Very Slightly Included	Very Slightly Included	Slightly Included	Included



ADDITIONAL GRADING INFORMATION

Polish **EXCELLENT**

Symmetry **EXCELLENT**

Fluorescence **NONE**

Inscription(s) **IGI LG791618525**

Comments: This Laboratory Grown Diamond was created by Chemical Vapor Deposition (CVD) growth process.
Indications of post-growth treatment.



IGI



April 17, 2026
IGI Report No LG791618525
EMERALD CUT
2.09 CARATS
8.62 X 6.03 X 3.98 MM
Color Grade **FANCY VIVID GREEN**
Clarity Grade **VS 1**
Depth **66%**
Table **62%**
Girdle **Medium**
Culet **Long**
Polish **EXCELLENT**
Symmetry **EXCELLENT**
Fluorescence **NONE**
Inscription(s) **IGI LG791618525**
Comments: This Laboratory Grown Diamond was created by Chemical Vapor Deposition (CVD) growth process.
Indications of post-growth treatment.