



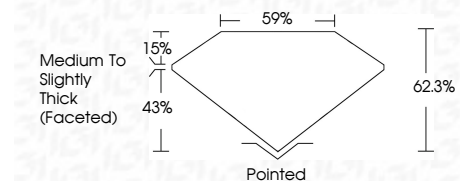
ELECTRONIC COPY

LG791618360 Report verification at igi.org



April 10, 2026 IGI Report Number LG791618360 Description LABORATORY GROWN DIAMOND Shape and Cutting Style OVAL BRILLIANT Measurements 10.04 X 7.18 X 4.47 MM

GRADING RESULTS Carat Weight 2.02 CARATS Color Grade F Clarity Grade VS 1



ADDITIONAL GRADING INFORMATION Polish EXCELLENT Symmetry EXCELLENT Fluorescence NONE Inscription(s) IGI LG791618360 Comments: This Laboratory Grown Diamond was created by Chemical Vapor Deposition (CVD) growth process. Type IIa



April 10, 2026 IGI Report No LG791618360 OVAL BRILLIANT 10.04 X 7.18 X 4.47 MM 2.02 CARATS F VS 1 62.3% 59% Medium to Slightly Thick (Faceted) Pointed EXCELLENT EXCELLENT NONE IGI LG791618360 Comments: This Laboratory Grown Diamond was created by Chemical Vapor Deposition (CVD) growth process. Type IIa

LABORATORY GROWN DIAMOND REPORT

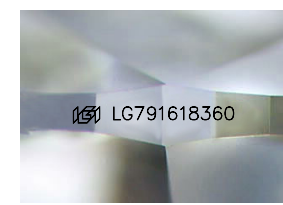
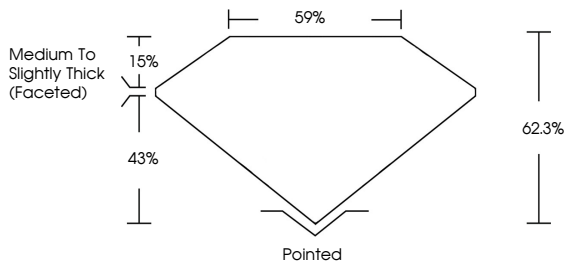
April 10, 2026 IGI Report Number LG791618360 Description LABORATORY GROWN DIAMOND Shape and Cutting Style OVAL BRILLIANT Measurements 10.04 X 7.18 X 4.47 MM

GRADING RESULTS Carat Weight 2.02 CARATS Color Grade F Clarity Grade VS 1

ADDITIONAL GRADING INFORMATION Polish EXCELLENT Symmetry EXCELLENT Fluorescence NONE Inscription(s) IGI LG791618360

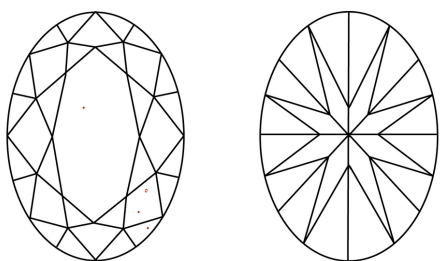
Comments: This Laboratory Grown Diamond was created by Chemical Vapor Deposition (CVD) growth process. Type IIa

PROPORTIONS



Sample Image Used

CLARITY CHARACTERISTICS



KEY TO SYMBOLS Red symbols indicate internal characteristics. Green symbols indicate external characteristics.

Table with 10 columns: D, E, F, G, H, I, J, Faint, Very Light, Light

Table with 6 columns: FL, IF, VS 1-2, VS 1-2, SI 1-2, I 1-3

