



ELECTRONIC COPY

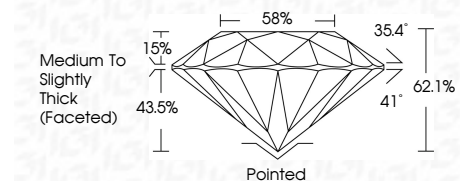
LG791617504 Report verification at igi.org



April 20, 2026 IGI Report Number LG791617504 Description LABORATORY GROWN DIAMOND Shape and Cutting Style ROUND BRILLIANT Measurements 9.27 - 9.30 X 5.77 MM

GRADING RESULTS

Carat Weight 3.07 CARATS Color Grade E Clarity Grade VVS 1 Cut Grade IDEAL



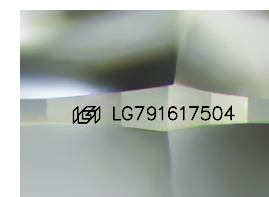
ADDITIONAL GRADING INFORMATION

Polish EXCELLENT Symmetry EXCELLENT Fluorescence NONE Inscription(s) LG791617504 Comments: This Laboratory Grown Diamond was created by Chemical Vapor Deposition (CVD) growth process. Type IIa



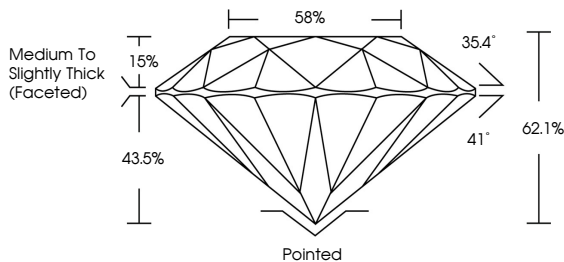
April 20, 2026 IGI Report No LG791617504 ROUND BRILLIANT 9.27 - 9.30 X 5.77 MM 3.07 CARATS E VVS 1 IDEAL 62.1% 58% Medium To Slightly Thick (Faceted) Pointed EXCELLENT EXCELLENT NONE LG791617504

Comments: This Laboratory Grown Diamond was created by Chemical Vapor Deposition (CVD) growth process. Type IIa

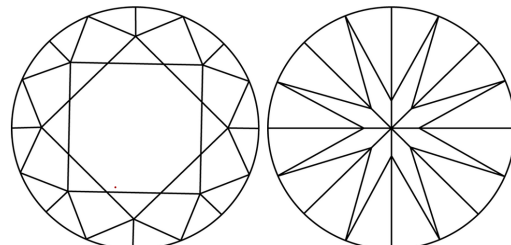


Sample Image Used

PROPORTIONS



CLARITY CHARACTERISTICS



KEY TO SYMBOLS

Red symbols indicate internal characteristics. Green symbols indicate external characteristics.

COLOR

Color scale table with categories D, E, F, G, H, I, J, Faint, Very Light, Light

CLARITY

Clarity scale table with categories FL, IF, VVS 1-2, VS 1-2, SI 1-2, I 1-3, Flawless, Internally Flawless, Very Very Slightly Included, Very Slightly Included, Slightly Included, Included

