



ELECTRONIC COPY

LG791616609
Report verification at igi.org



April 17, 2026

IGI Report Number **LG791616609**

Description **LABORATORY GROWN DIAMOND**

Shape and Cutting Style **ROUND BRILLIANT**

Measurements **6.63 - 6.68 X 4.01 MM**

GRADING RESULTS

Carat Weight **1.08 CARAT**

Color Grade **FANCY INTENSE PINK**

Clarity Grade **VVS 2**

Cut Grade **IDEAL**

April 17, 2026
IGI Report Number **LG791616609**
Description **LABORATORY GROWN DIAMOND**
Shape and Cutting Style **ROUND BRILLIANT**
Measurements **6.63 - 6.68 X 4.01 MM**

GRADING RESULTS

Carat Weight **1.08 CARAT**

Color Grade **FANCY INTENSE PINK**

Clarity Grade **VVS 2**

Cut Grade **IDEAL**

ADDITIONAL GRADING INFORMATION

Polish **EXCELLENT**

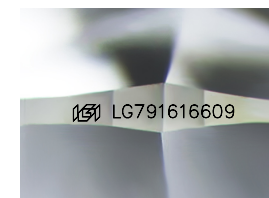
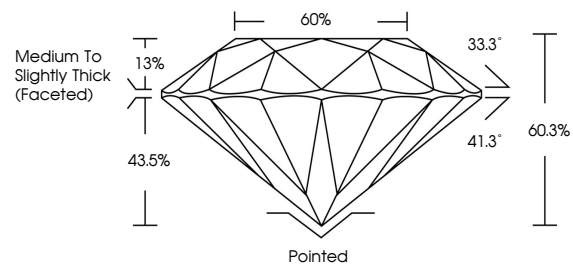
Symmetry **EXCELLENT**

Fluorescence **SLIGHT**

Inscription(s) **LG791616609**

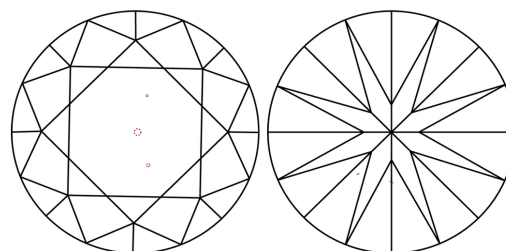
Comments: This Laboratory Grown Diamond was created by Chemical Vapor Deposition (CVD) growth process.
Indications of post-growth treatment.

PROPORTIONS



Sample Image Used

CLARITY CHARACTERISTICS



KEY TO SYMBOLS

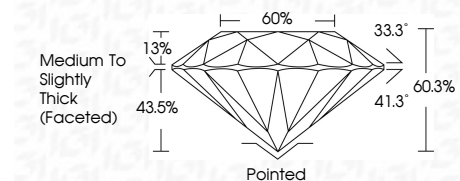
Red symbols indicate internal characteristics.
Green symbols indicate external characteristics.

COLOR

D E F G H I J Faint Very Light Light

CLARITY

FL	IF	VVS ¹⁻²	VS ¹⁻²	SI ¹⁻²	I ¹⁻³
Flawless	Internally Flawless	Very Very Slightly Included	Very Slightly Included	Slightly Included	Included



ADDITIONAL GRADING INFORMATION

Polish **EXCELLENT**

Symmetry **EXCELLENT**

Fluorescence **SLIGHT**

Inscription(s) **LG791616609**

Comments: This Laboratory Grown Diamond was created by Chemical Vapor Deposition (CVD) growth process.
Indications of post-growth treatment.



April 17, 2026
IGI Report No LG791616609
ROUND BRILLIANT
6.63 - 6.68 X 4.01 MM
1.08 CARAT
FANCY INTENSE PINK
VVS 2
IDEAL
60.3%
60%
Medium To Slightly Thick (Faceted)
Pointed
EXCELLENT
EXCELLENT
EXCELLENT
SLIGHT
IGI LG791616609
Comments: This Laboratory Grown Diamond was created by Chemical Vapor Deposition (CVD) growth process.
Indications of post-growth treatment.