



ELECTRONIC COPY

LG791616175
Report verification at igi.org



April 16, 2026
IGI Report Number LG791616175
Description LABORATORY GROWN DIAMOND
Shape and Cutting Style PRINCESS CUT
Measurements 10.97 X 10.77 X 7.37 MM
GRADING RESULTS
Carat Weight 7.66 CARATS
Color Grade E
Clarity Grade VVS 2

April 16, 2026
IGI Report Number LG791616175
Description LABORATORY GROWN DIAMOND
Shape and Cutting Style PRINCESS CUT
Measurements 10.97 X 10.77 X 7.37 MM

GRADING RESULTS

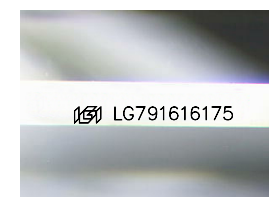
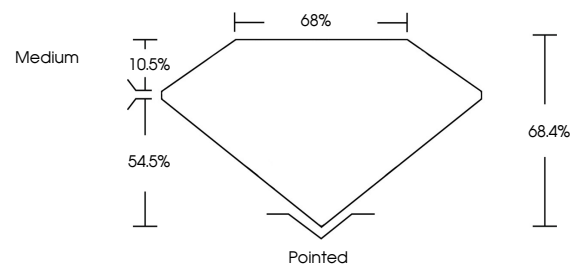
Carat Weight 7.66 CARATS
Color Grade E
Clarity Grade VVS 2

ADDITIONAL GRADING INFORMATION

Polish EXCELLENT
Symmetry EXCELLENT
Fluorescence NONE
Inscription(s) IGI LG791616175

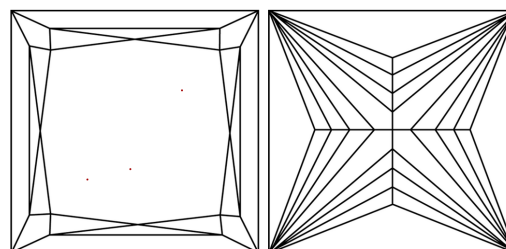
Comments: This Laboratory Grown Diamond was created by Chemical Vapor Deposition (CVD) growth process. Type IIa

PROPORTIONS



Sample Image Used

CLARITY CHARACTERISTICS



KEY TO SYMBOLS

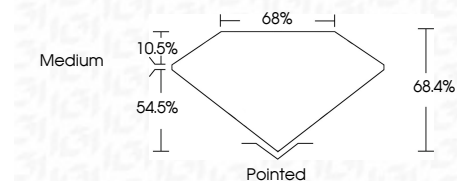
Red symbols indicate internal characteristics.
Green symbols indicate external characteristics.

COLOR

D E F G H I J Faint Very Light Light

CLARITY

FL IF VVS 1-2 VS 1-2 SI 1-2 I 1-3
Flawless Internally Flawless Very Very Slightly Included Very Slightly Included Slightly Included Included



ADDITIONAL GRADING INFORMATION

Polish EXCELLENT
Symmetry EXCELLENT
Fluorescence NONE
Inscription(s) IGI LG791616175
Comments: This Laboratory Grown Diamond was created by Chemical Vapor Deposition (CVD) growth process. Type IIa



April 16, 2026
IGI Report No LG791616175
PRINCESS CUT
10.97 X 10.77 X 7.37 MM
7.66 CARATS
E
VVS 2
68.4%
65%
Medium
Pointed
EXCELLENT
EXCELLENT
NONE
IGI LG791616175
Comments: This Laboratory Grown Diamond was created by Chemical Vapor Deposition (CVD) growth process. Type IIa