



ELECTRONIC COPY

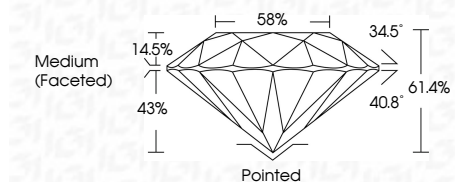
LG791608614
Report verification at igi.org



April 9, 2026
IGI Report Number **LG791608614**
Description **LABORATORY GROWN DIAMOND**
Shape and Cutting Style **ROUND BRILLIANT**
Measurements **8.71 - 8.74 X 5.36 MM**

GRADING RESULTS

Carat Weight **2.52 CARATS**
Color Grade **D**
Clarity Grade **VS 2**
Cut Grade **IDEAL**

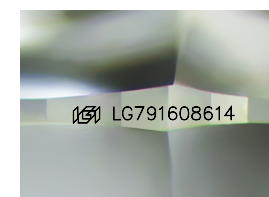


ADDITIONAL GRADING INFORMATION

Polish **EXCELLENT**
Symmetry **EXCELLENT**
Fluorescence **NONE**
Inscription(s) **IGI LG791608614**
Comments: This Laboratory Grown Diamond was created by Chemical Vapor Deposition (CVD) growth process. Type IIa

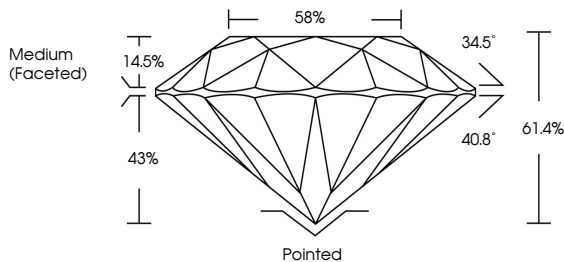


April 9, 2026
IGI Report No **LG791608614**
ROUND BRILLIANT
8.71 - 8.74 X 5.36 MM
2.52 CARATS
Color Grade **D**
Clarity Grade **VS 2**
Cut Grade **IDEAL**
Depth **61.4%**
Table **58%**
Medium (Faceted)
Culet **Pointed**
Polish **EXCELLENT**
Symmetry **EXCELLENT**
Fluorescence **NONE**
Inscription(s) **IGI LG791608614**
Comments: This Laboratory Grown Diamond was created by Chemical Vapor Deposition (CVD) growth process. Type IIa

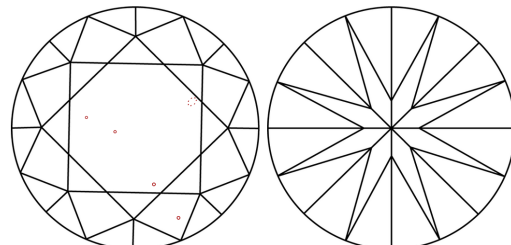


Sample Image Used

PROPORTIONS



CLARITY CHARACTERISTICS



KEY TO SYMBOLS

Red symbols indicate internal characteristics.
Green symbols indicate external characteristics.

COLOR

D E F G H I J Faint Very Light Light

CLARITY

FL	IF	VS ¹⁻²	VS ¹⁻²	SI ¹⁻²	I ¹⁻³
Flawless	Internally Flawless	Very Very Slightly Included	Very Slightly Included	Slightly Included	Included

